



PAN 2022 - 23 Reflections

PANinBC.CA: Strengthening British Columbia's collective
action on HIV, hepatitis C, and harm reduction.

Leadership Message

WHERE WE ARE NOW

Our work is developed and delivered in multiple regions in northwestern Turtle Island, and we are committed to respectfully developing relationships with Indigenous peoples, communities, and Nations in the areas in which we work.

PAN's member organizations, big and small, rural and urban, have always been the backbone of the organization. PAN was initially formed to fill a need for those organizations to come together to help amplify the work being done in every region of the province. PAN provided an environment for passionate people working at separate organizations to find strength in the solidarity of a shared focus, which at the time was HIV, but has since evolved to meet the specific needs of individual communities.

PAN member organizations are specialists in understanding what is happening on the ground in their communities. With the ongoing drug poisoning crisis that continues to wreak havoc on the lives of

people who use drugs, the continued impacts of COVID, the advancements in testing and treatment for HIV and hepatitis C and ever-present stigma, that community specialist role is vital.

This year we thought we would do something a little different with the annual report. In years past we have reported directly on achievements and goals reached by the different departments at PAN but this year we wanted to focus on acknowledging our relationships with the member organizations that make up PAN. (We encourage you to visit our website paninbc.ca, to see the work that's been done this past year and years prior, but this focus is on you.)



Leadership Message

Back in 2018 when we were developing our soon-to-expire strategic plan, our vision was to lead an inspired, strong and effective community-based response to HIV/AIDS, hepatitis C and related communicable diseases and conditions.

Two of our four strategic directions were created based on direct feedback and comments from member organizations:

- Strengthen knowledge-driven planning, decision making, and implementation among PAN's members and allies to respond to complex issues relating to HIV, hepatitis C and the social determinants of health
- Provide a collective voice to respond to ongoing and emerging health and social justice issues

The strategic plan, as envisioned by the member organizations, provided us with a path. Using the key strategies to keep us on that path, our values and approaches guided

how we design, carry out and evaluate our work, and how we form and maintain our partnerships. This past year we had the opportunity to witness firsthand our member groups in action in a variety of different ways, including, but not limited to:

- Learning from member groups about immediate and ongoing concerns in their communities at our bi-monthly PAN Members and Allies' Meetings
- Working directly with member organizations to support people living with HIV from every region of the province to attend Positive Leadership Development Institute trainings

"I think this organization is awesome and I will continue to support you in any way I can. Thank you!"

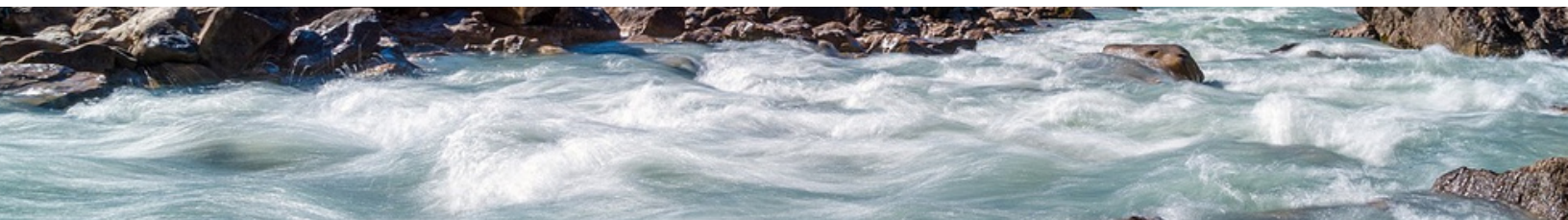


Leadership Message

- Convening a table of small urban, rural, and remote harm reduction organizations (the SURR project) to build knowledge and research directions
- Attending the Interior Health BBI Network gathering in Osoyoos
- Organizing the ongoing work of the provincial Collective Impact Network
- Hosting a community and capacity building gathering in Prince George focused on educators working in HIV, hep C, STBBI and harm reduction
- Ongoing meetings with the Ministries about the funding of our sector, sustainability and retention of human resources. We have also been active in discussions about the need to expand safer supply options in consultation with experts and PWLLE. In many cases our members are working on the frontlines of the drug

poisoning crisis, including in small urban, rural and remote communities

We continue to learn so much from the work of our member organizations and are consistently inspired and motivated by their actions. Despite ongoing challenges faced by our member organizations - inadequate funding for growing service demand, accumulated grief and loss, the growing backlash to harm reduction, the inequalities imposed by geography - just to name a few, PAN members persevere, adapting to changing landscapes, and seeking out creative solutions and outcomes to continue meeting the needs of the people they serve.



Leadership Message

We want to acknowledge our members and communicate our respect and admiration for the work they do, and we encourage you to visit the members page on our website and spend a little time visiting your fellow members websites to learn about their work, see the alignments, share stories, and collaborate.

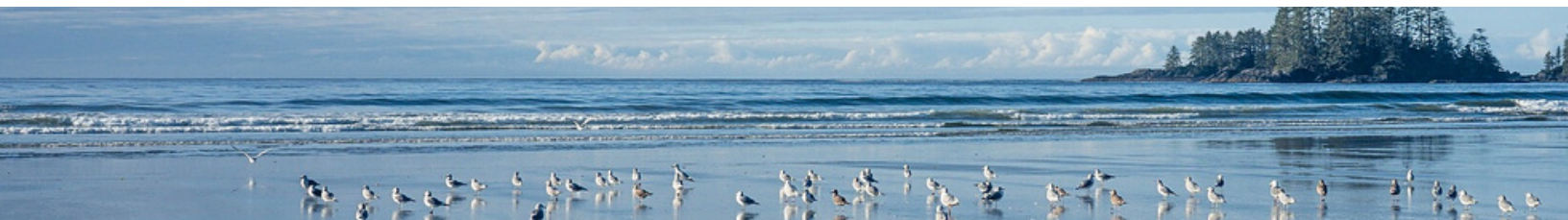
We also want to thank our funders for their continued support for the work we do, the PAN Board of Directors for their commitment and guidance and the PAN staff for their dedication.

– Katrina Jensen and Patrick McDougall, PAN Board Co-Chairs; and Stacy Leblanc, Acting Executive Director*

*PAN's Executive Director, Jennifer Evin Jones, is currently on a short leave, but will be returning soon.

“We deeply appreciate the support of PAN in keeping us up to speed on best practices, funding opportunities, and advocacy.”

(Quotes drawn from the Members and Allies Survey)



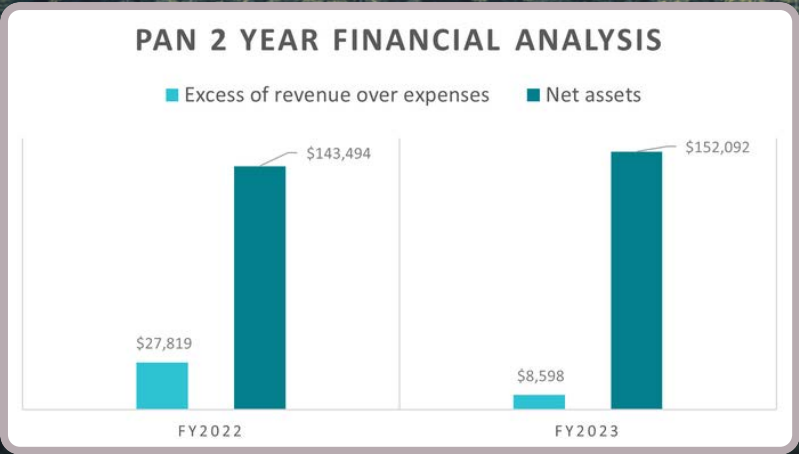
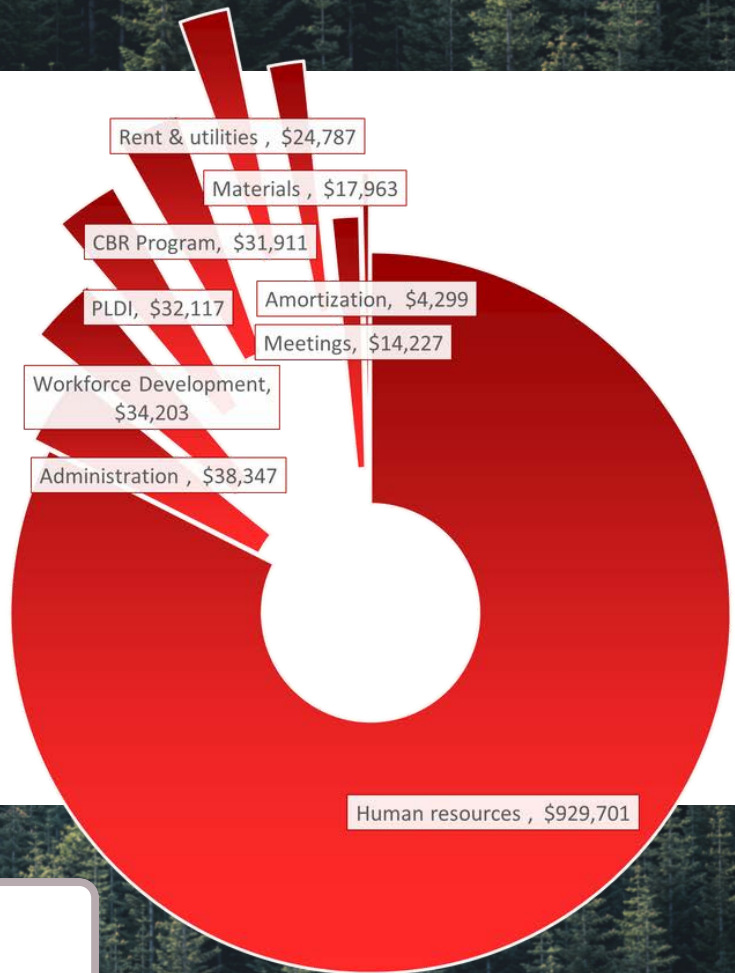
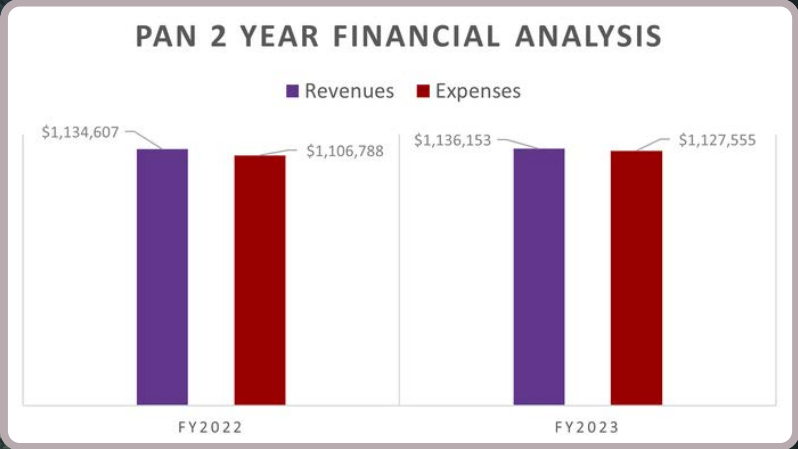
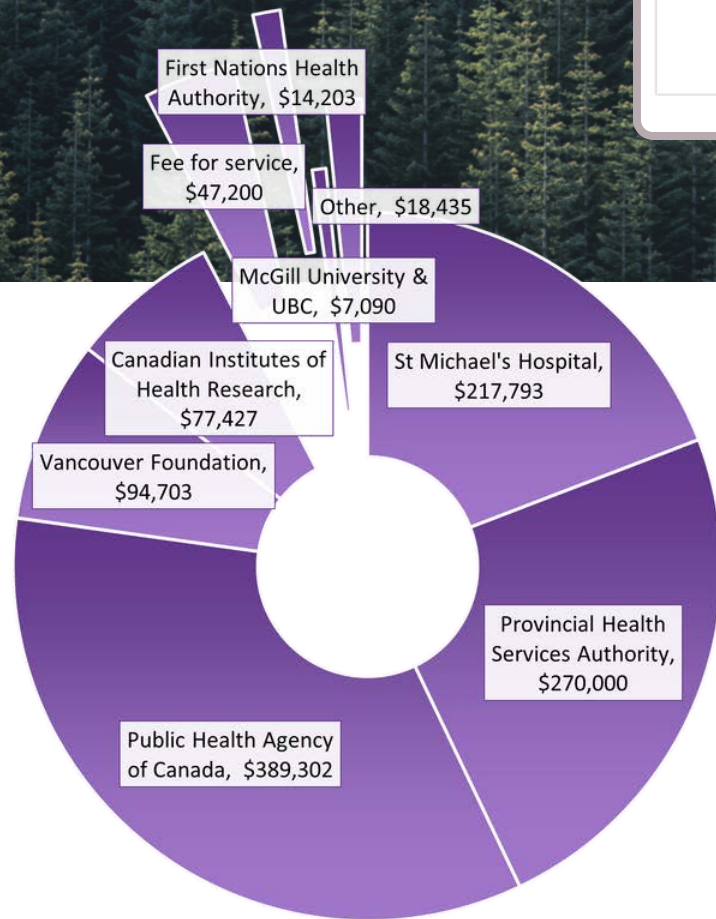
The heart of our network is made up of over 40 organizations providing HIV, hepatitis C and harm reduction services and support in what is colonially referred to as British Columbia.

**PAN is
Member-
driven**

Member input on needs, issues, challenges and successes drives our work in the present and shapes our future directions. Members provide an invaluable perspective on frontline service realities that informs training, research, and advocacy with government and other decision makers. [Learn more.](#)



Financial Snapshot



April 1 2022 -
March 31 2023



Learn more about our work:

[Training and Leadership](#)

[Research and Evaluation](#)

[Policy Change and Collective Action](#)
[Resources](#)

[News and Community Events](#)

PAN's work would not be possible without the generous contributions of our [funders, sponsors and partners](#). We acknowledge and deeply appreciate their support.