

By Cleo Neville, BA student, Health and Community Services, in collaboration with the Pacific AIDS Network

Background

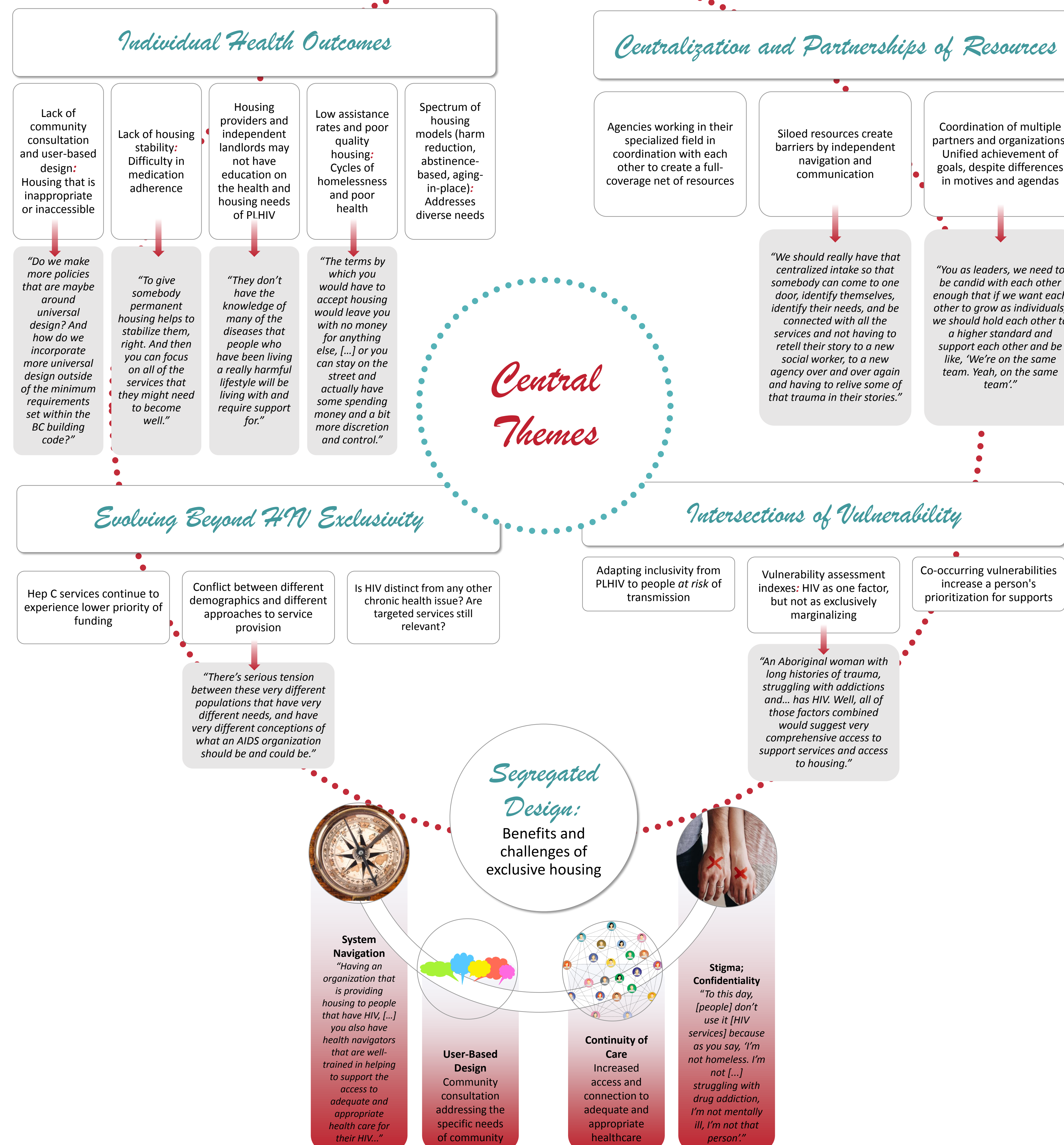
Positive Living, Positive Homes (PLPH) is a community-based research project in BC being conducted by the Pacific AIDS Network (PAN) in partnership with the University of Victoria. Examining Prince George, Kamloops, and Vancouver communities, PLPH explores how housing experiences interact with and impact the health and well-being of people living with HIV/AIDS (PLHIV). The study seeks to investigate how current housing and HIV programs, services, and policies have informed the health outcomes of case-study participants, and identify best practices for housing services and policies to better meet the needs of PLHIV. The study has interviewed policy makers and service providers in the three communities, and has interviewed people living with HIV at two time points, using qualitative interview, timeline and home mapping techniques.

Policy in Kamloops, BC

This poster investigates the in-depth, semi-structured interviews of 6 HIV and/or housing policy makers in Kamloops, BC, exploring perspectives on the intersections of housing and HIV and the benefits and challenges found in different approaches. By examining different facets and experiences of housing and/or HIV policy development and implementation, PLPH hopes to highlight key issues for the PLHIV community in Kamloops, and identify strategies for service improvement. The policy makers participating in this study demonstrate a range of expertise and experience, including members of municipal government and leaders and administrators of social organizations. Interviews explored the work of housing and/or HIV policy development, enablers and barriers in that work, and perspectives on policies and other influencers of housing provision for PLHIV.

Central Concepts

- Barriers or issues with respect to people living with HIV and their ability to access housing and other support services
- Challenges policy-makers face in terms of implementing policies and structures to support services for people living with HIV
- Successes in terms of housing affordability, accessibility, supported housing and related services
- Relationships between housing and the prevention of new infections or harm reduction
- Community consultation and involvement in policy changes
- The potential to implement policies to support the housing needs of people living with HIV
- Ideas on ideal policy or service-system models for people in need of supportive housing and people living with HIV specifically



Recommendations

"The earthworm theory of change, that's kind of the work that we're doing; It's like, little earthworms, they're digging their holes under the surface doing all this stuff that hopefully leads to bigger change."

