



BC Centre for Disease Control
An agency of the Provincial Health Services Authority

Epidemiology of STIBBIs in BC: 2017 Update

Jason Wong

April 5, 2018

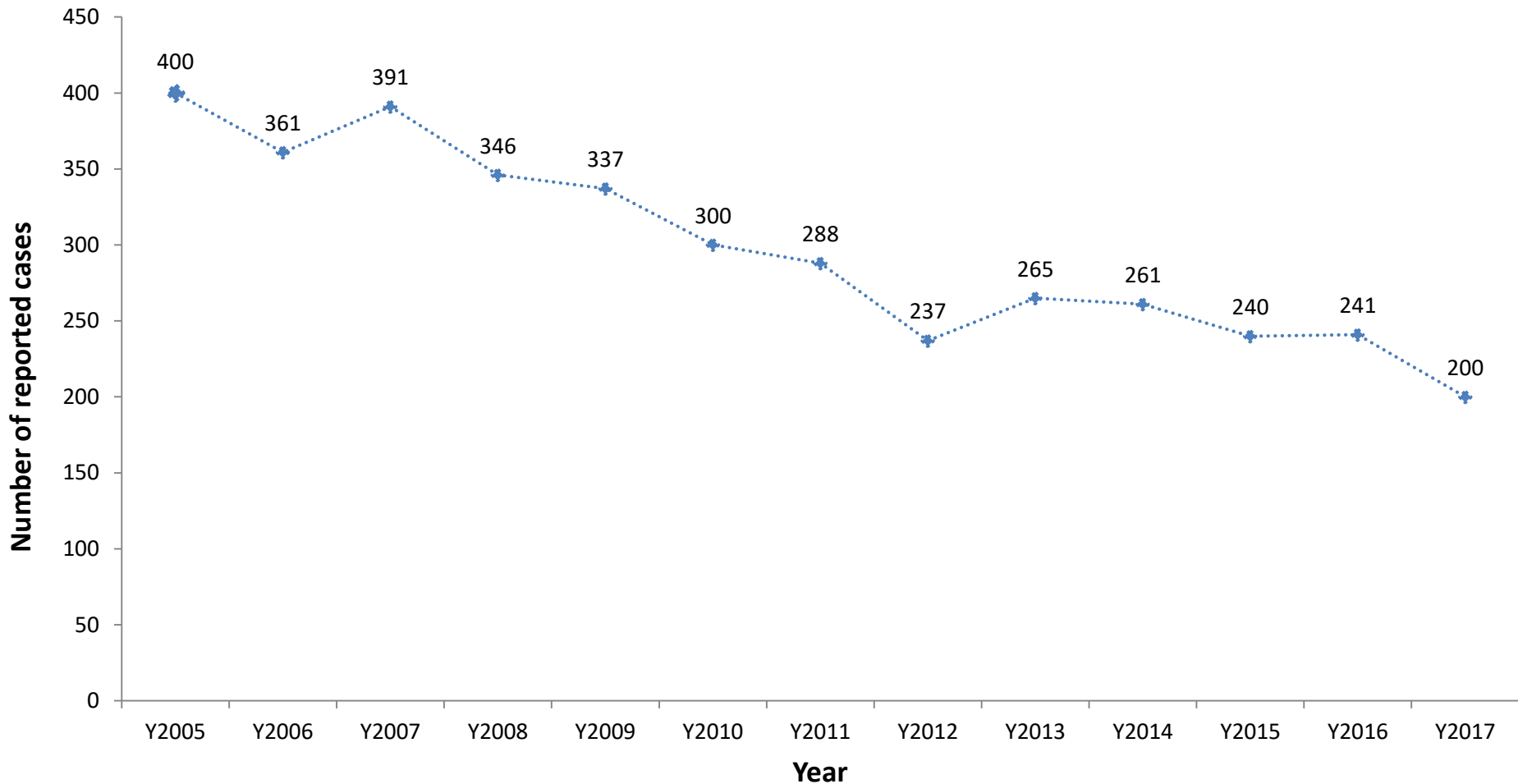


BC Centre for Disease Control

An agency of the Provincial Health Services Authority

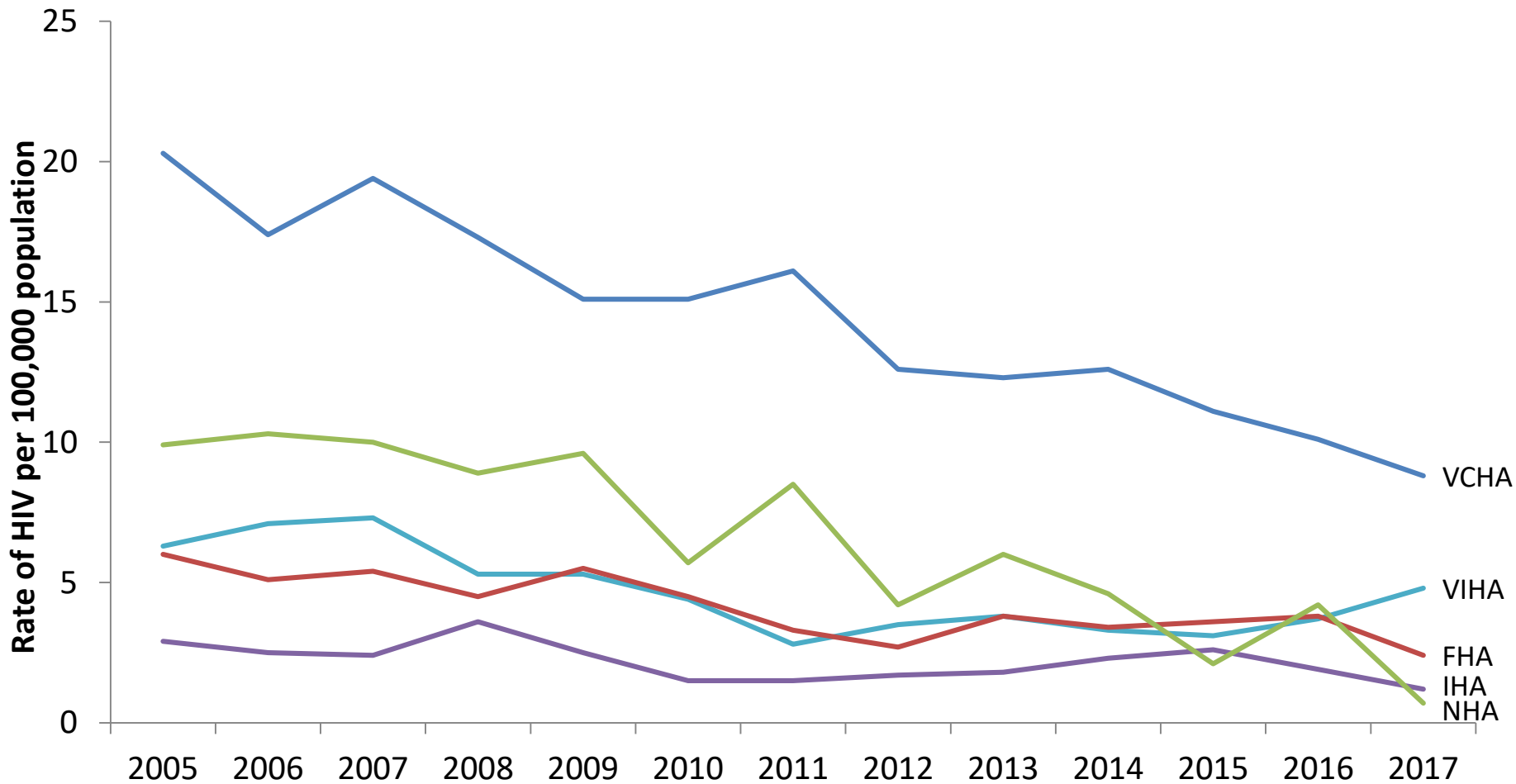
HIV

HIV Diagnoses BC



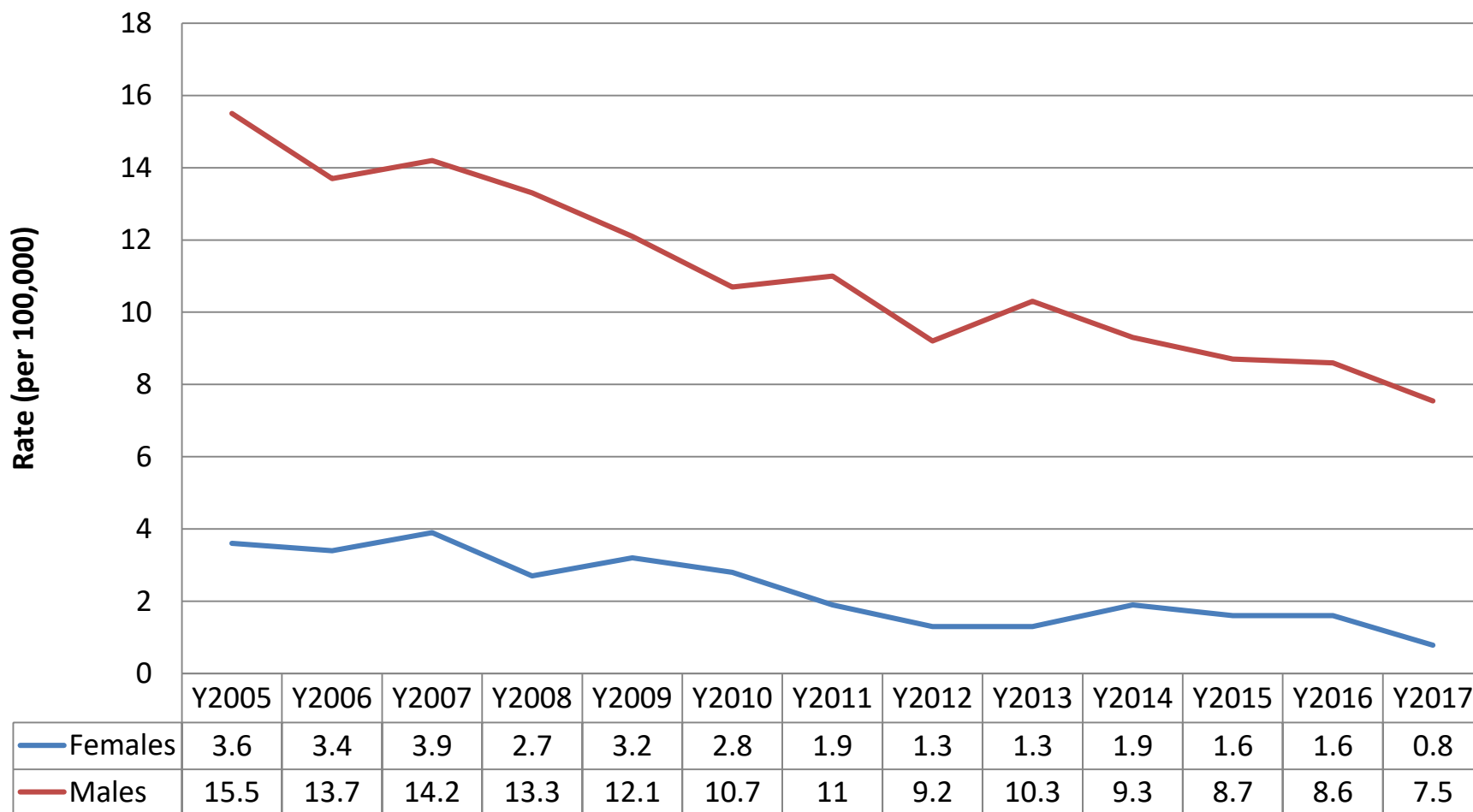
* Preliminary data, subject to change

HIV Diagnoses by RHA

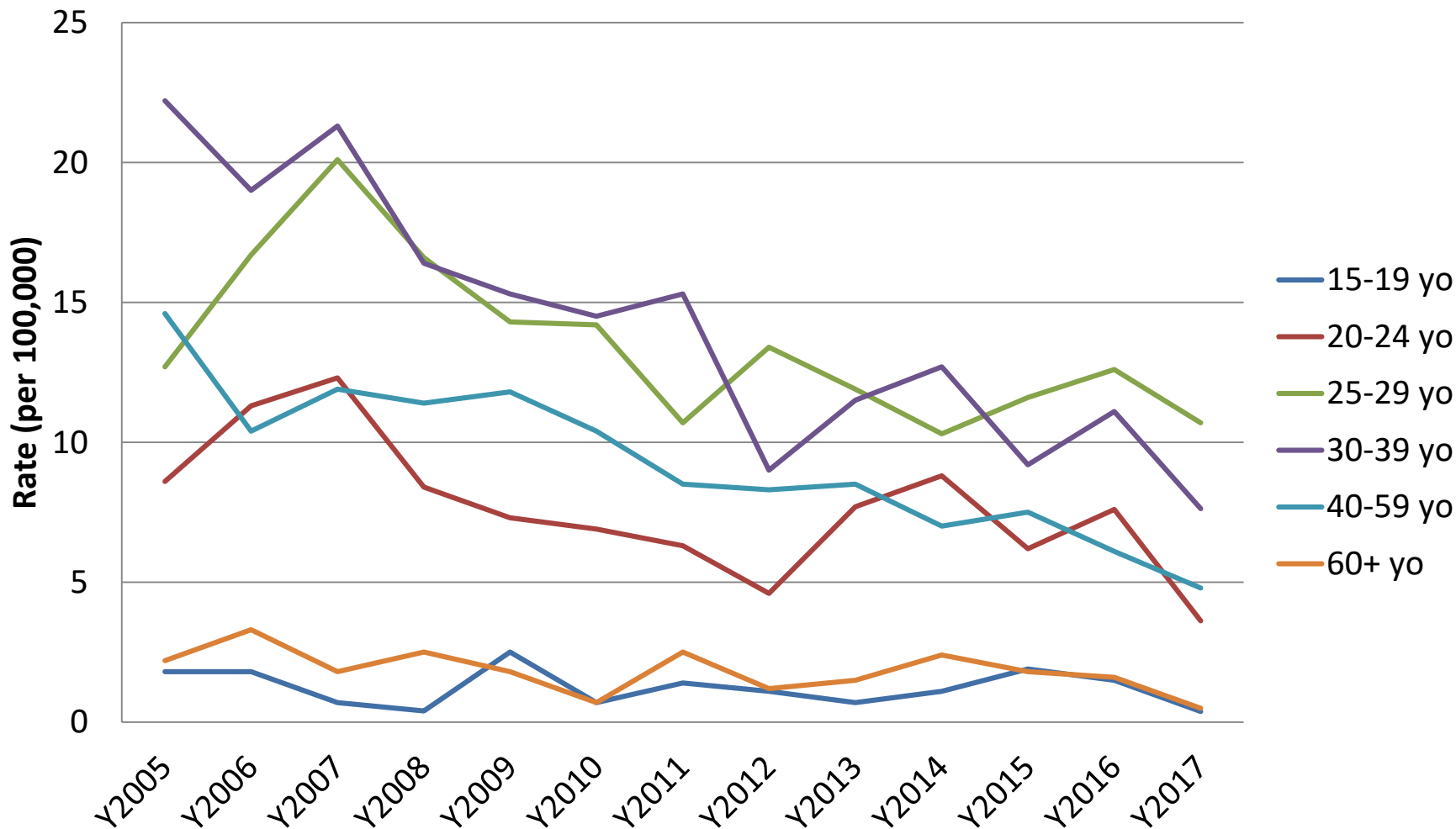


* Preliminary data, subject to change

HIV Diagnoses by Gender

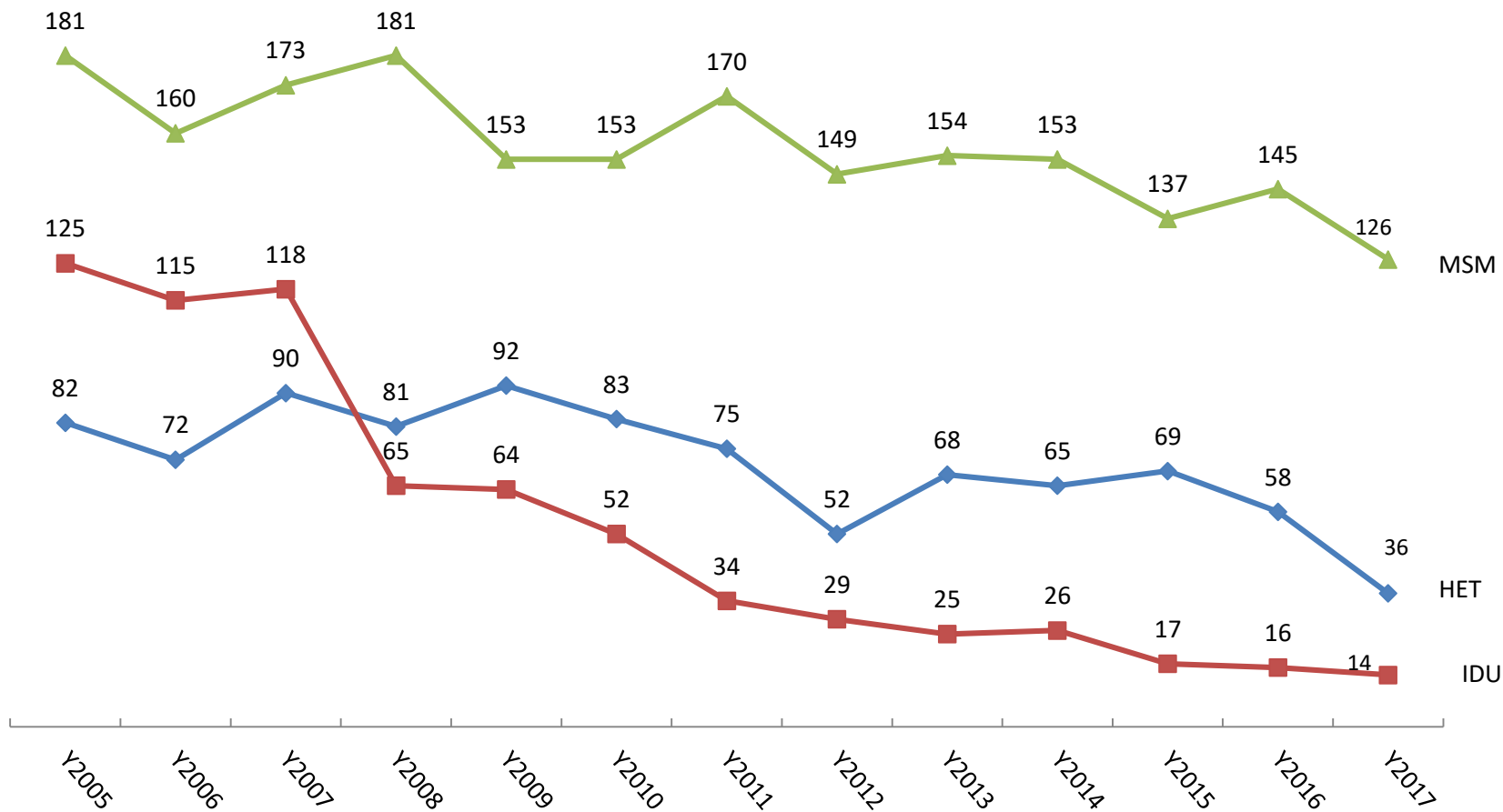


HIV Diagnoses by Age Group



*Preliminary data, subject to change

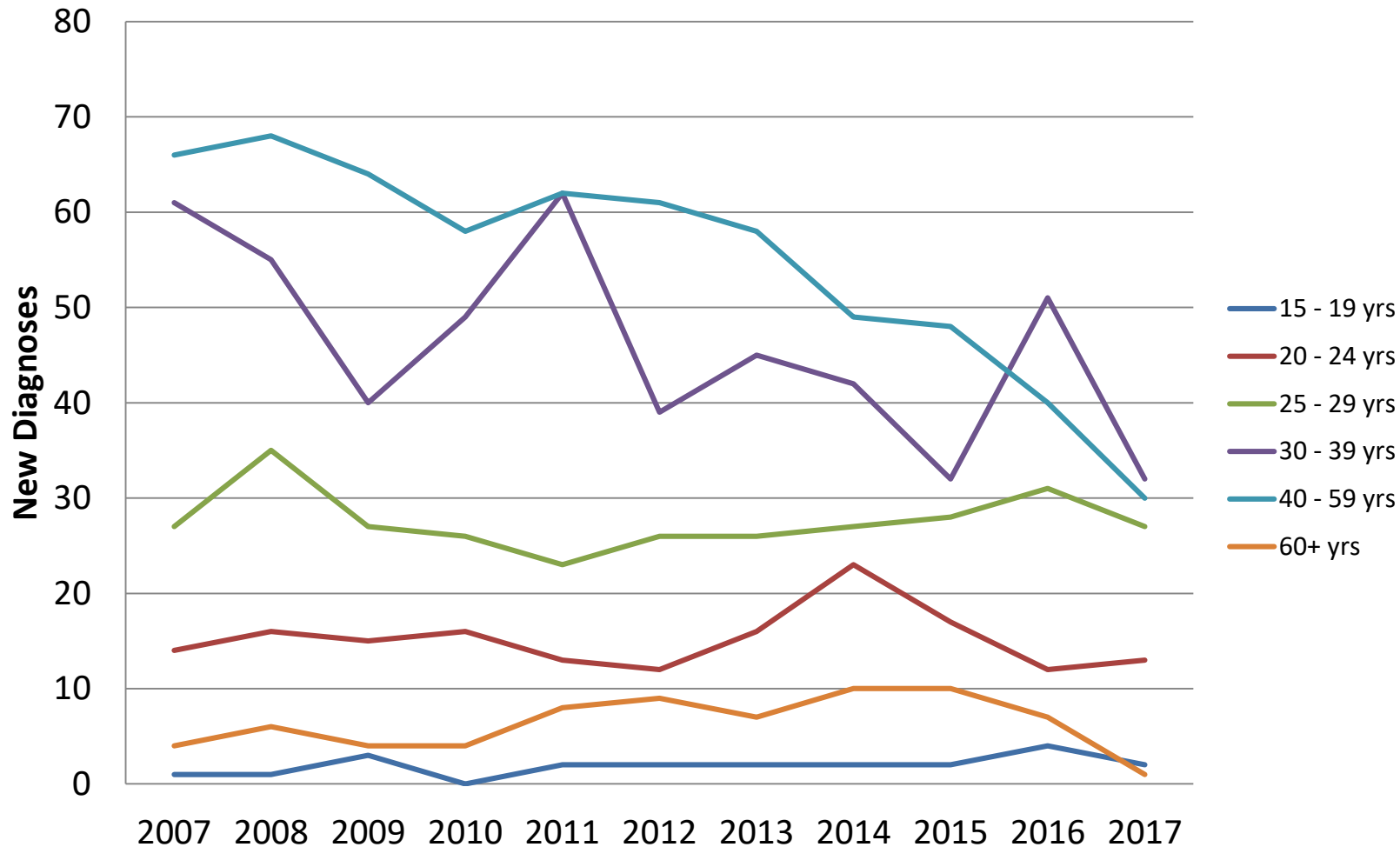
HIV Cases by Risk Group



Note: 12% of cases do not have risk group information

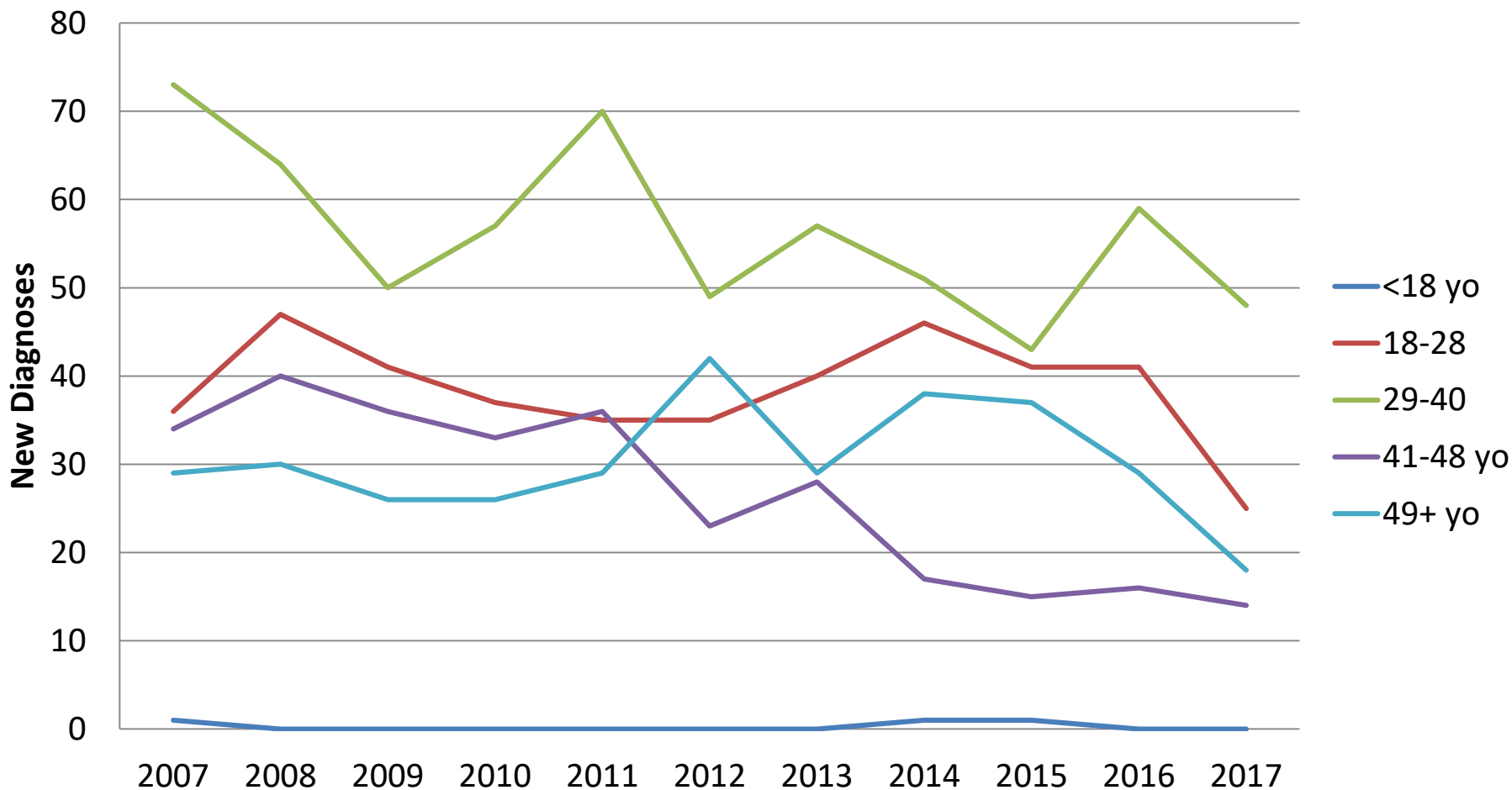
*Preliminary data, subject to change

HIV among gbMSM, by Age



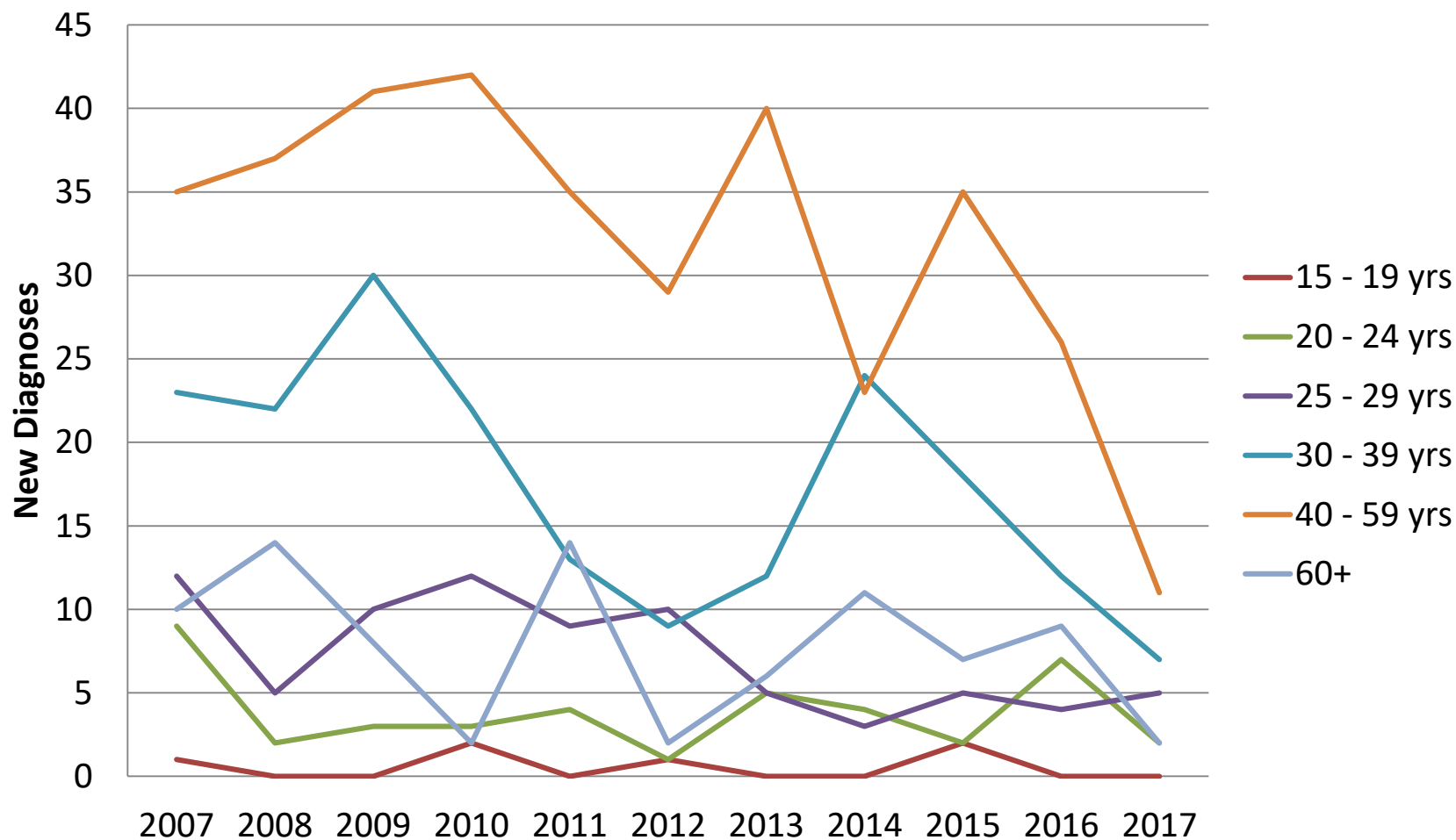
* Preliminary data, subject to change

HIV among gbMSM, by HIRI Age



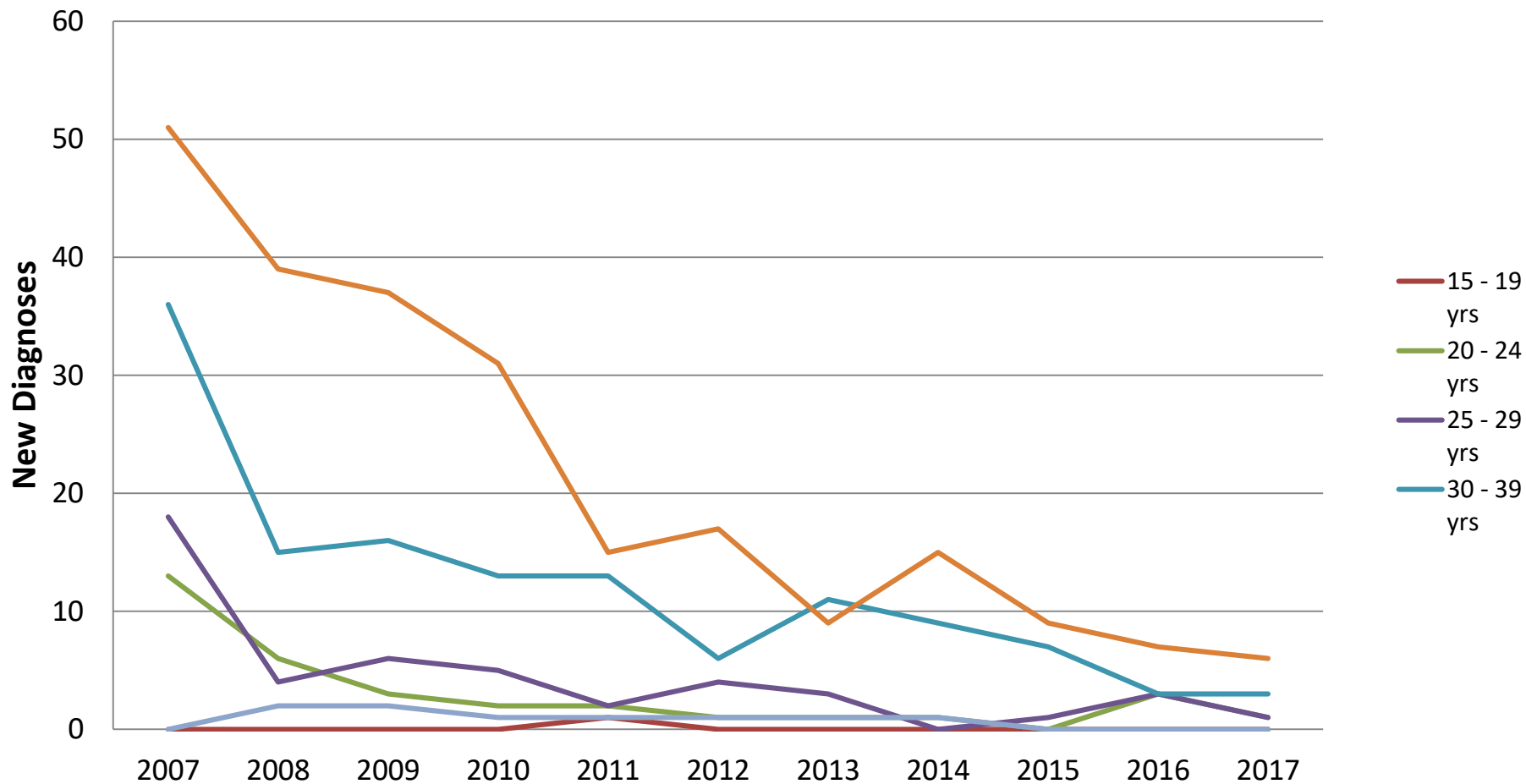
*Preliminary data, subject to change

HIV among heterosexuals, by Age



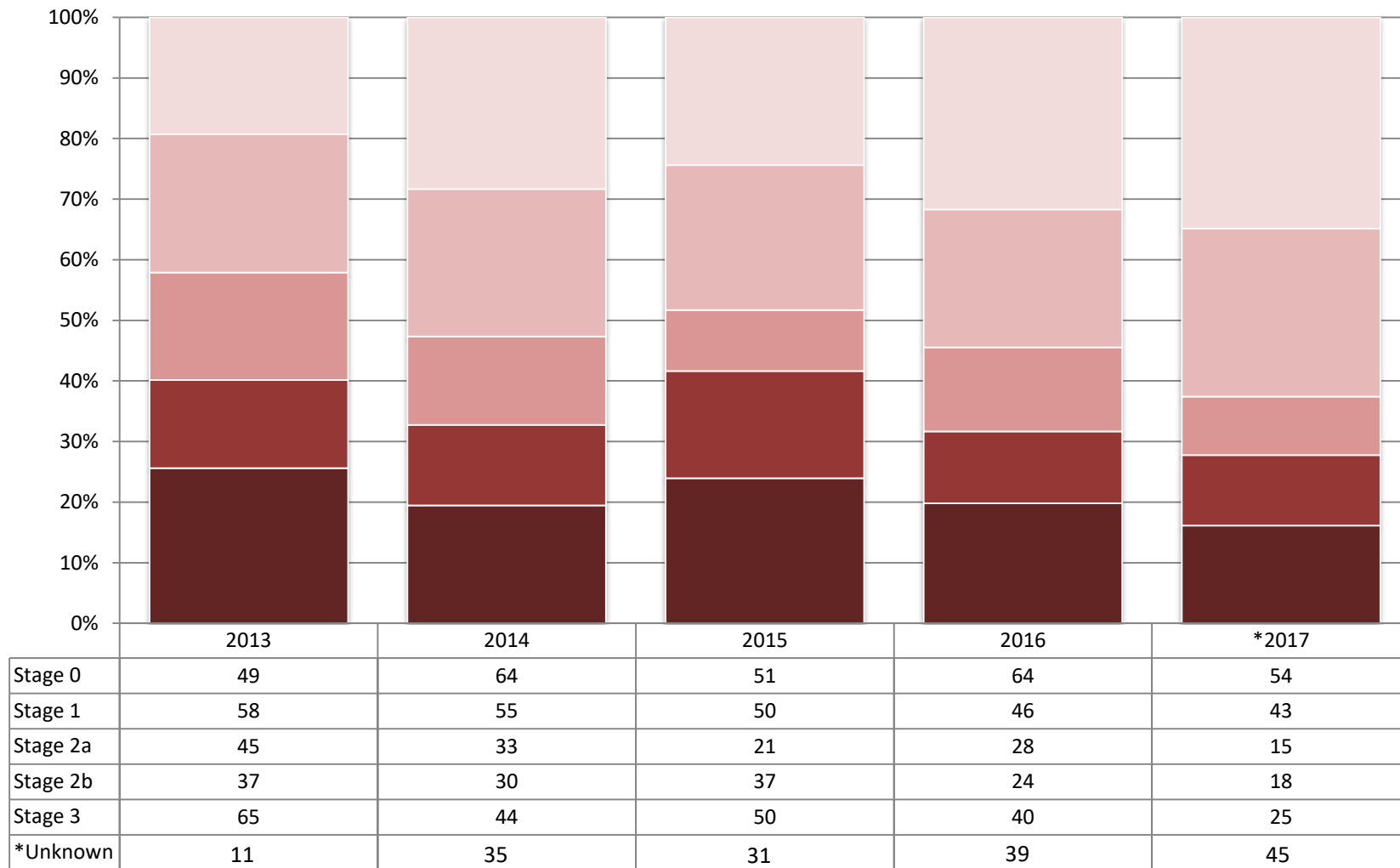
* Preliminary data, subject to change

HIV among PWID, by Age



*Preliminary data, subject to change

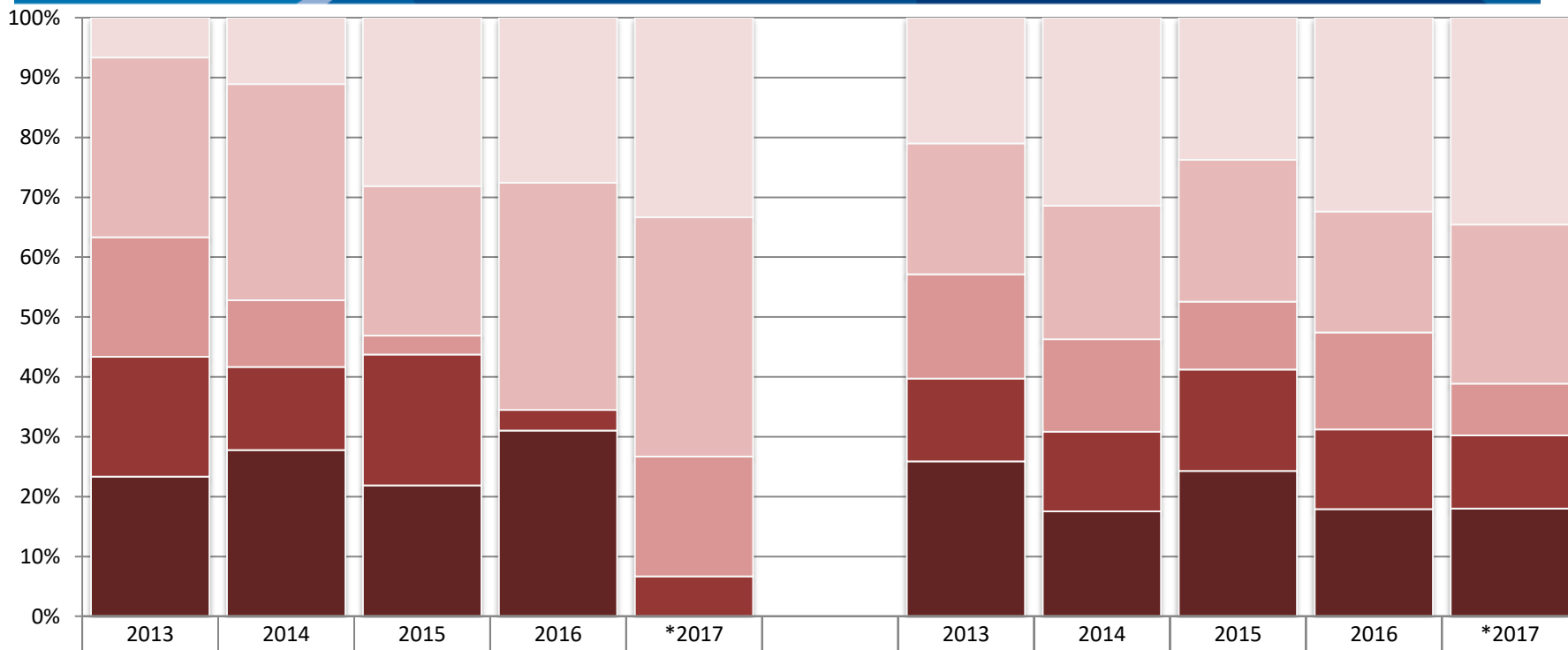
HIV Diagnoses by Stage



* Percentage calculations do not include Unknown counts.

** Preliminary data, subject to change*

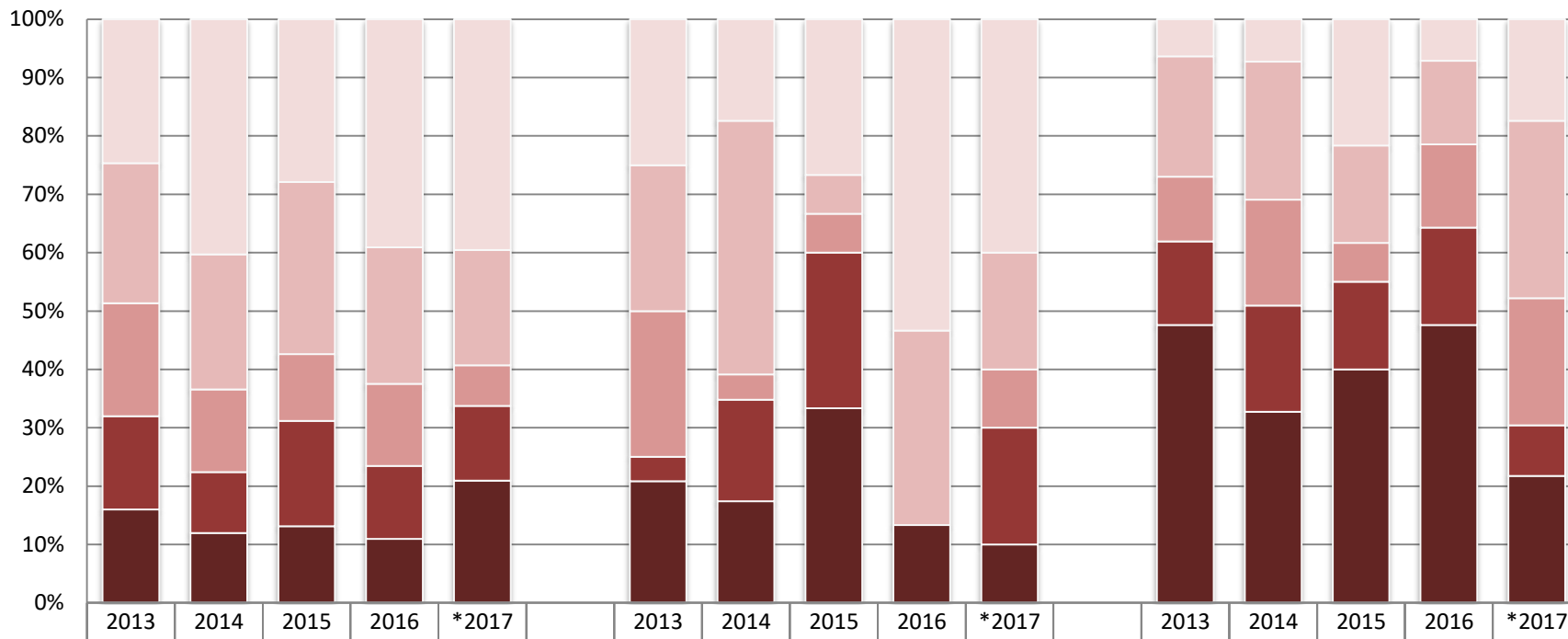
HIV Diagnoses by Stage



	Female						Male				
	2013	2014	2015	2016	*2017		2013	2014	2015	2016	*2017
Stage 0	2	4	9	8	5		47	59	42	56	48
Stage 1	9	13	8	11	6		49	42	42	35	37
Stage 2a	6	4	1	0	3		39	29	20	28	12
Stage 2b	6	5	7	1	1		31	25	30	23	17
Stage 3	7	10	7	9	0		58	33	43	31	25
*Unknown	1	8	5	9	4		10	27	26	30	41

*Preliminary data, subject to change

HIV Diagnoses by Stage



	MSM					PWID					HET				
	2013	2014	2015	2016	*2017	2013	2014	2015	2016	*2017	2013	2014	2015	2016	*2017
Stage 0	37	54	34	50	34	6	4	4	8	4	4	4	13	3	4
Stage 1	36	31	36	30	17	6	10	1	5	2	13	13	10	6	7
Stage 2a	29	19	14	18	6	6	1	1	0	1	7	10	4	6	5
Stage 2b	24	14	22	16	11	1	4	4	0	2	9	10	9	7	2
Stage 3	24	16	16	14	18	5	4	5	2	1	30	18	24	20	5
*Unknown	4	19	15	17	21	1	3	2	1	1	5	10	9	16	4

*Preliminary data, subject to change

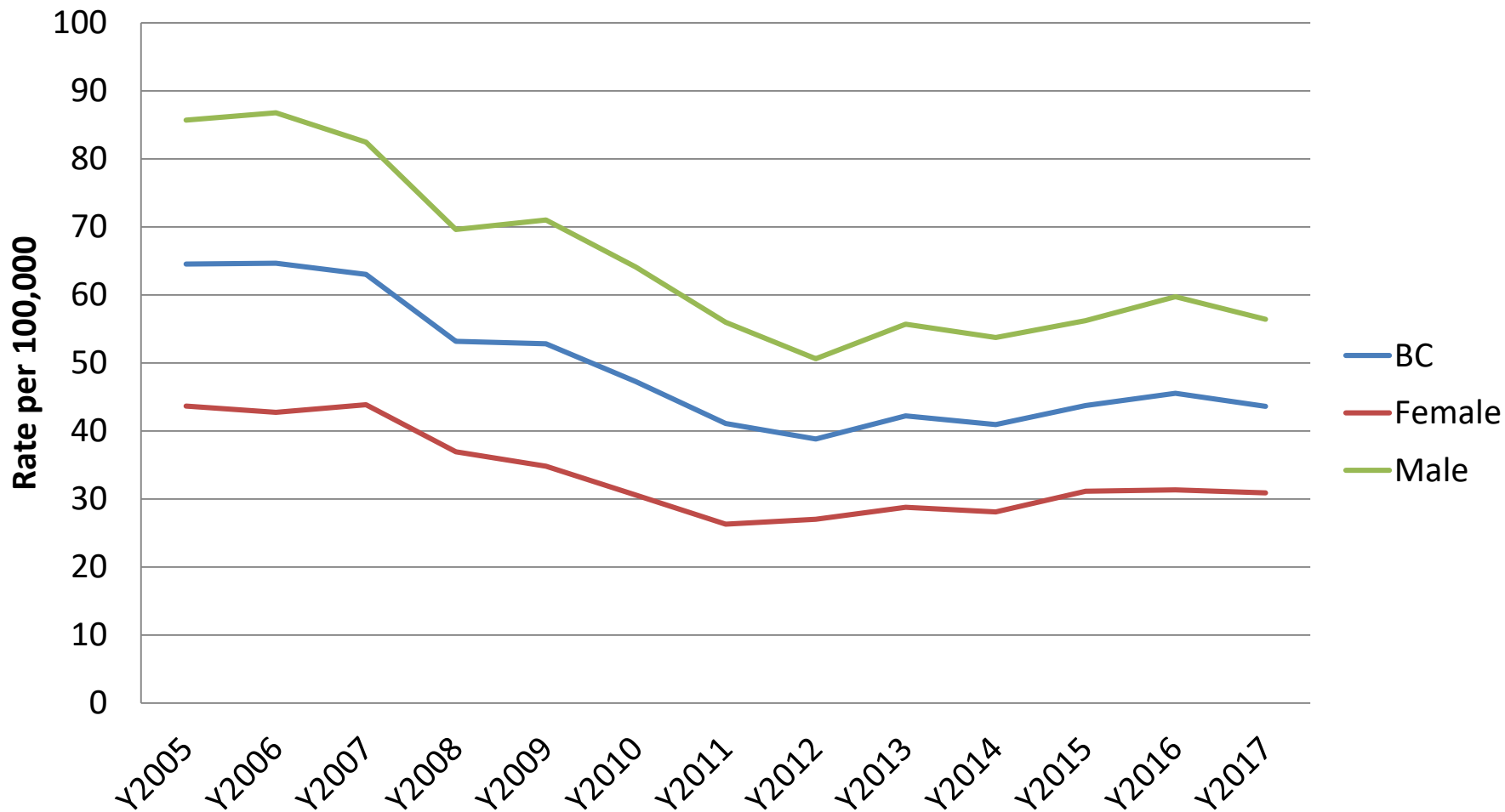


BC Centre for Disease Control

An agency of the Provincial Health Services Authority

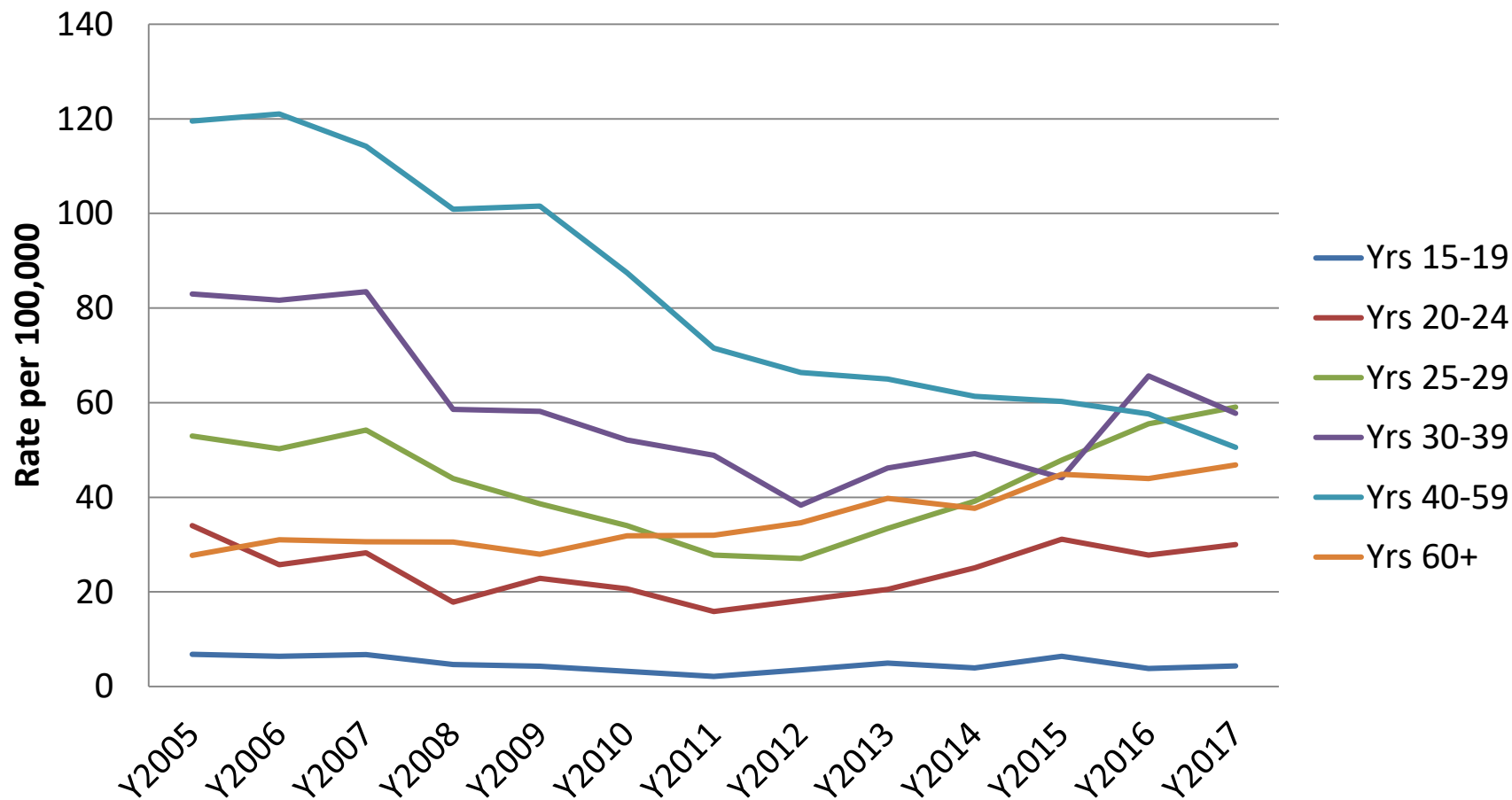
Hepatitis C

HCV Incidence in BC



*Preliminary data, subject to change

HCV Incidence by Age



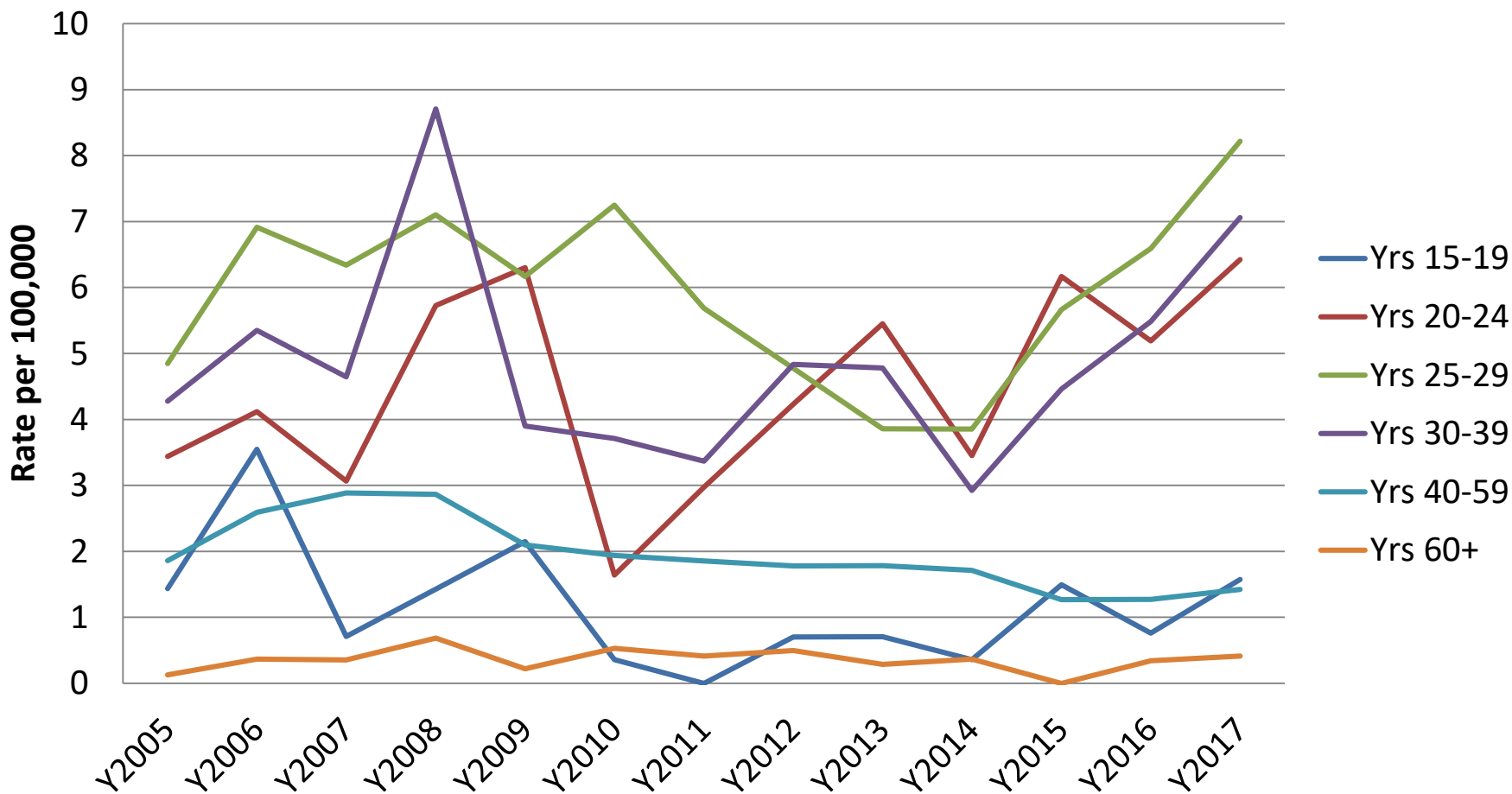
* Preliminary data, subject to change

Acute HCV Incidence in BC



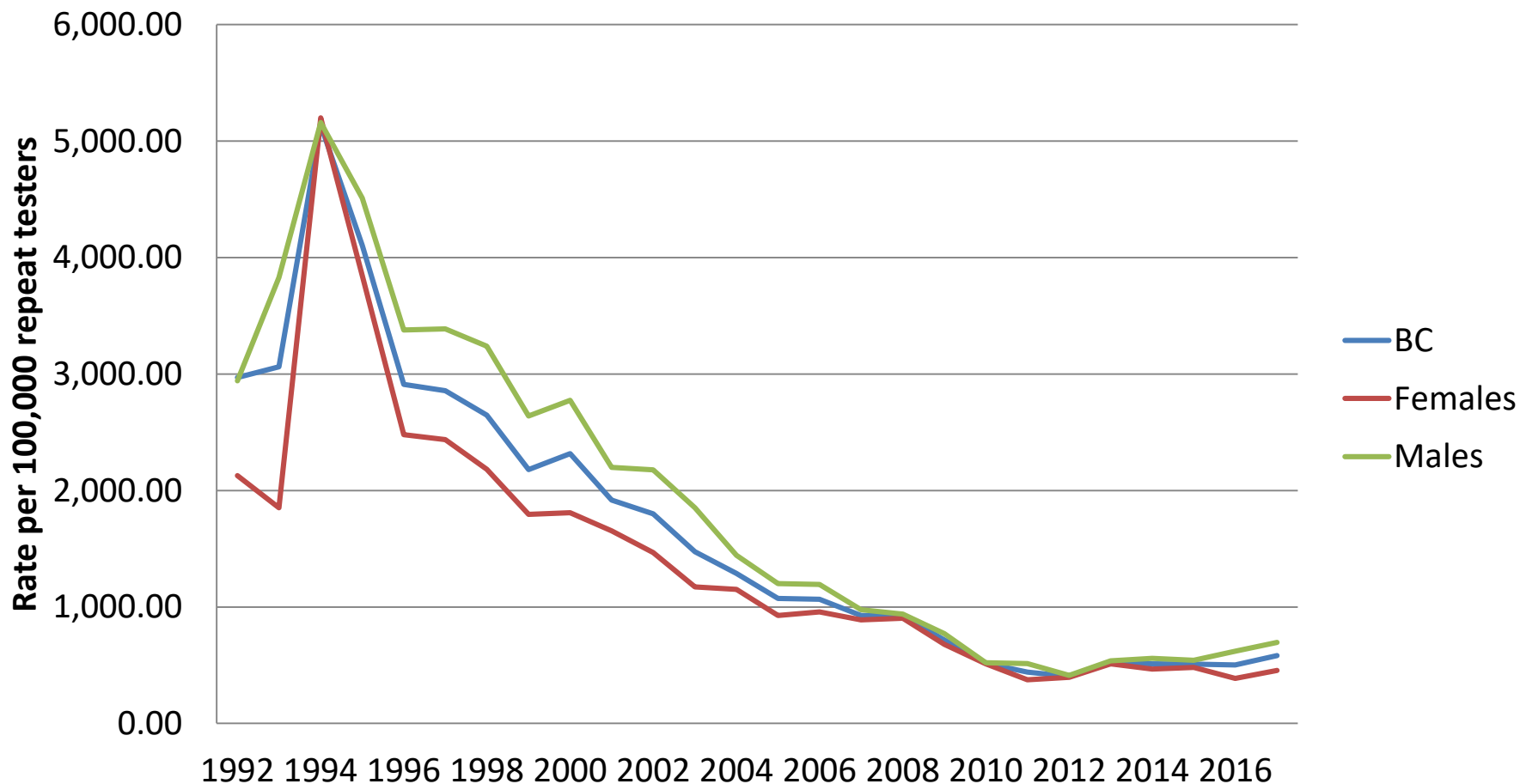
* Preliminary data, subject to change

Acute HCV Incidence by Age



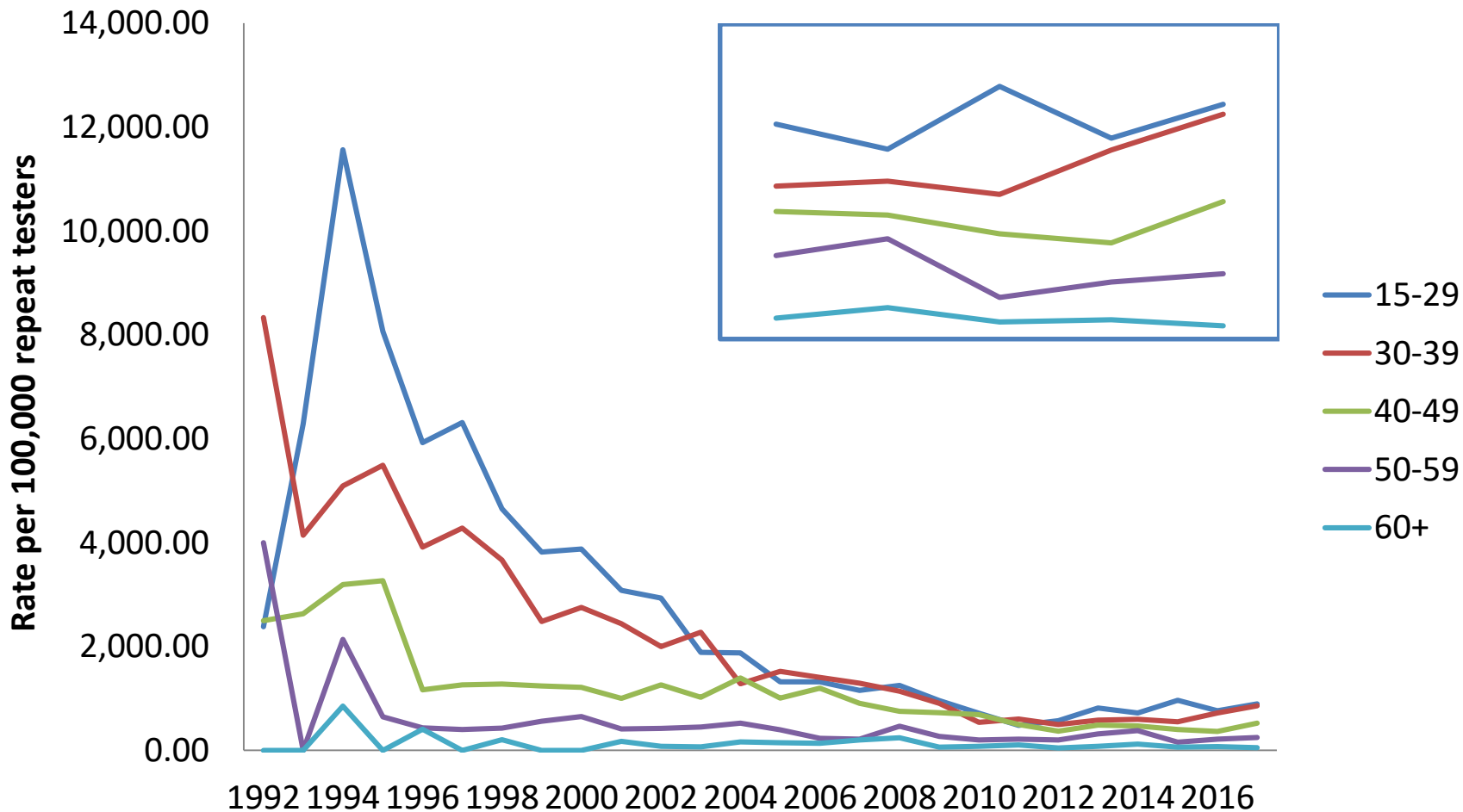
* Preliminary data, subject to change

HCV among Repeat Testers



* Preliminary data, subject to change

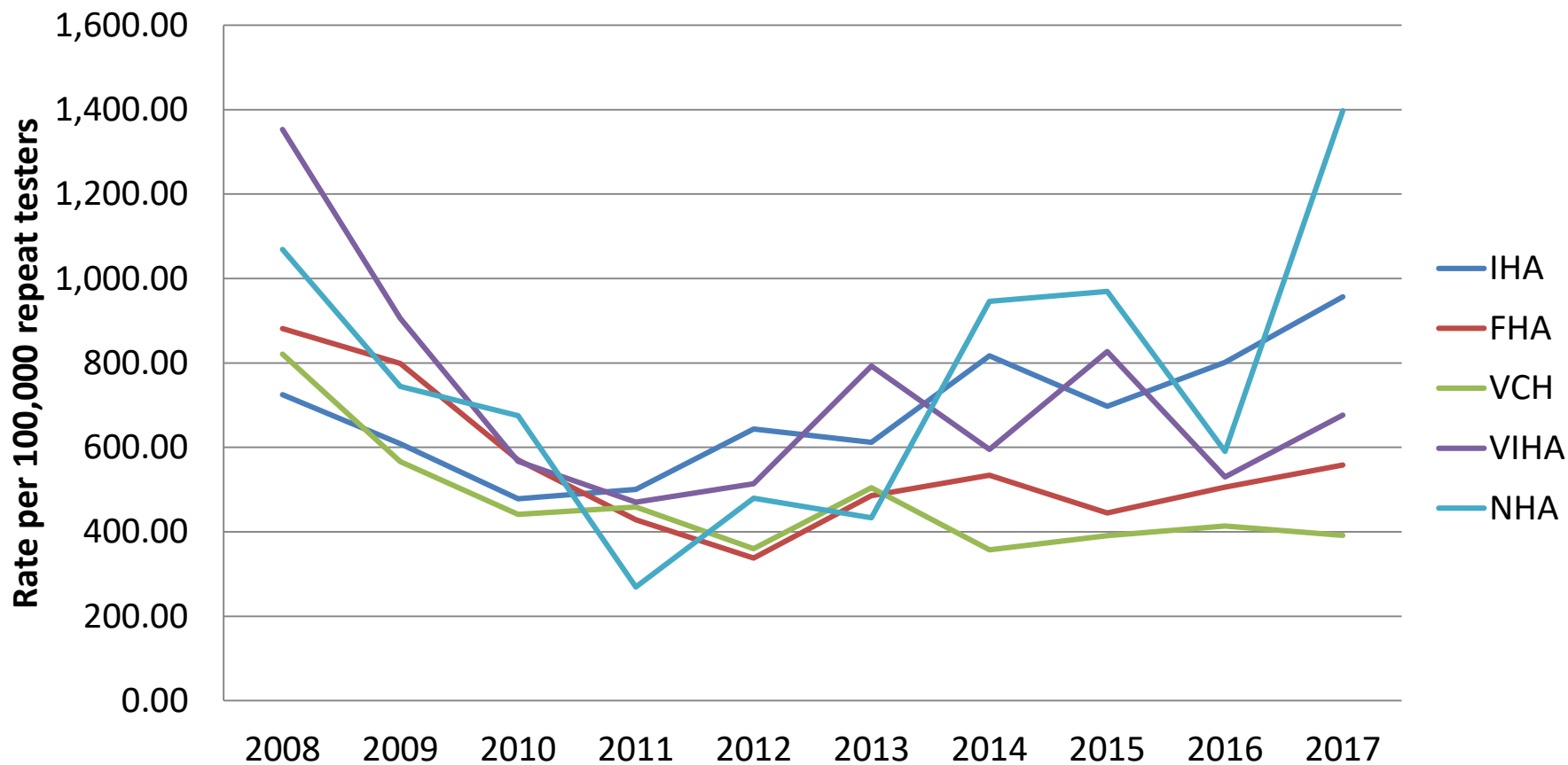
HCV among Repeat Testers by Age



* Preliminary data, subject to change

HCV among Repeat Testers by RHA

24-mo Seroconversion by RHA



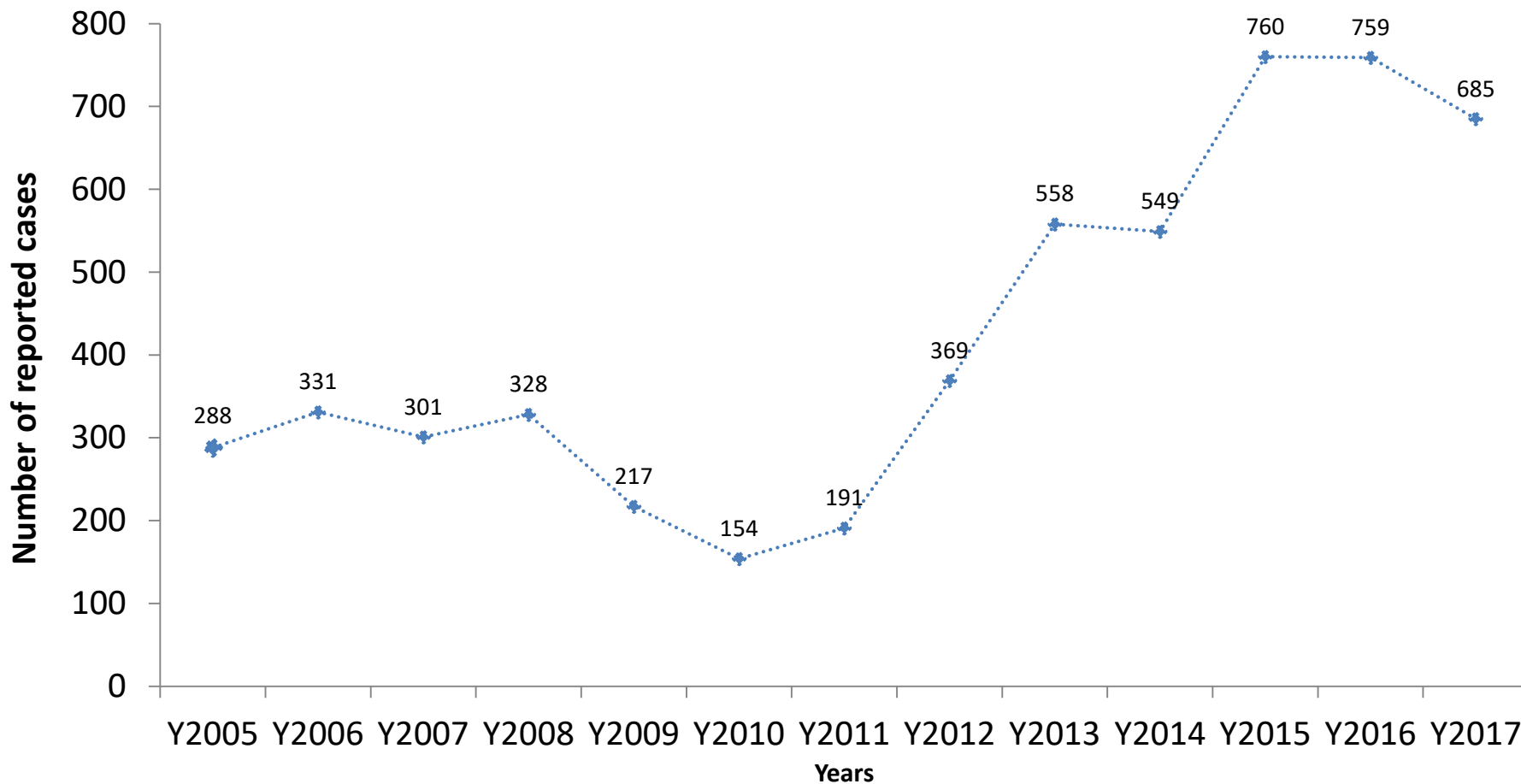
* Preliminary data, subject to change



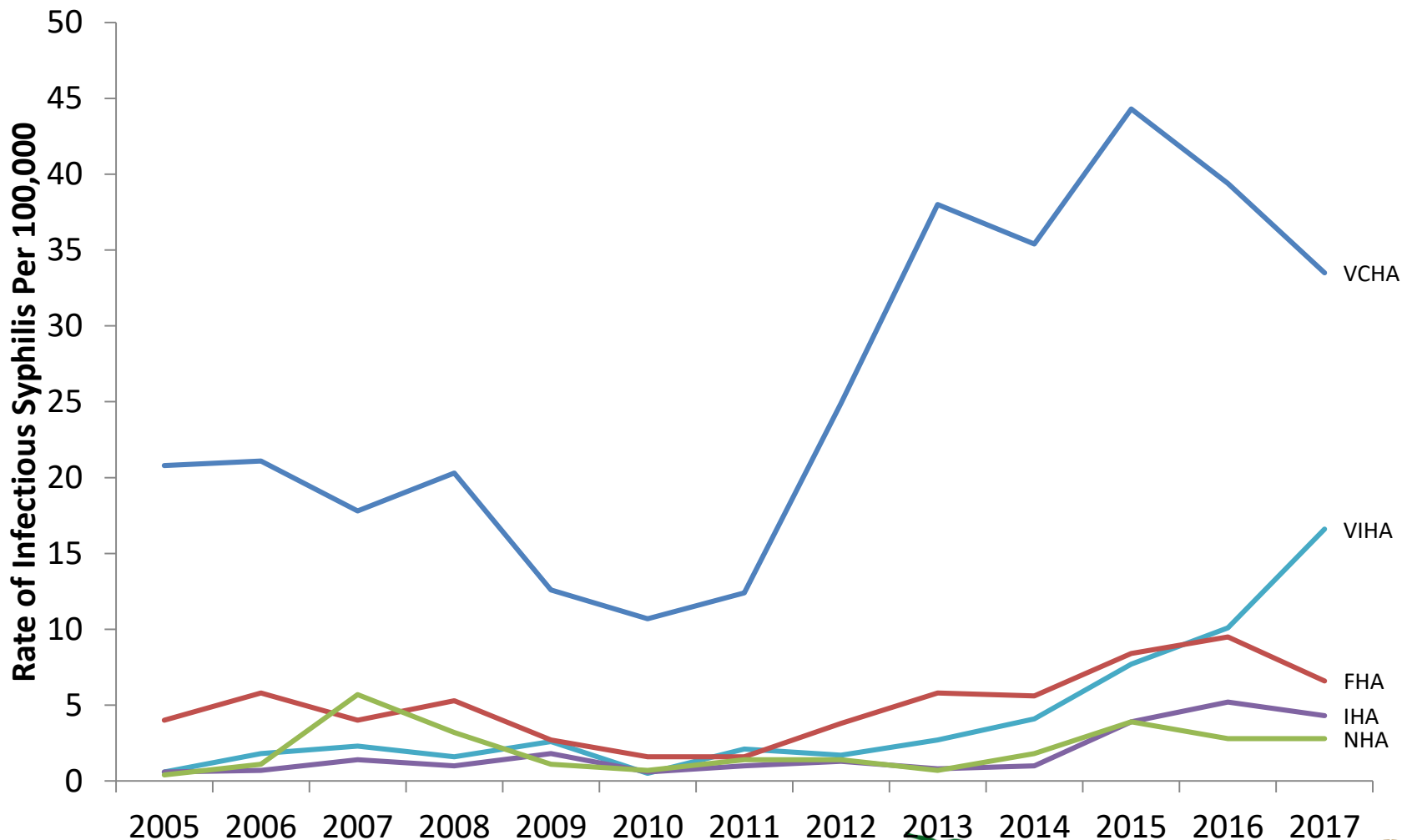
BC Centre for Disease Control
An agency of the Provincial Health Services Authority

Syphilis

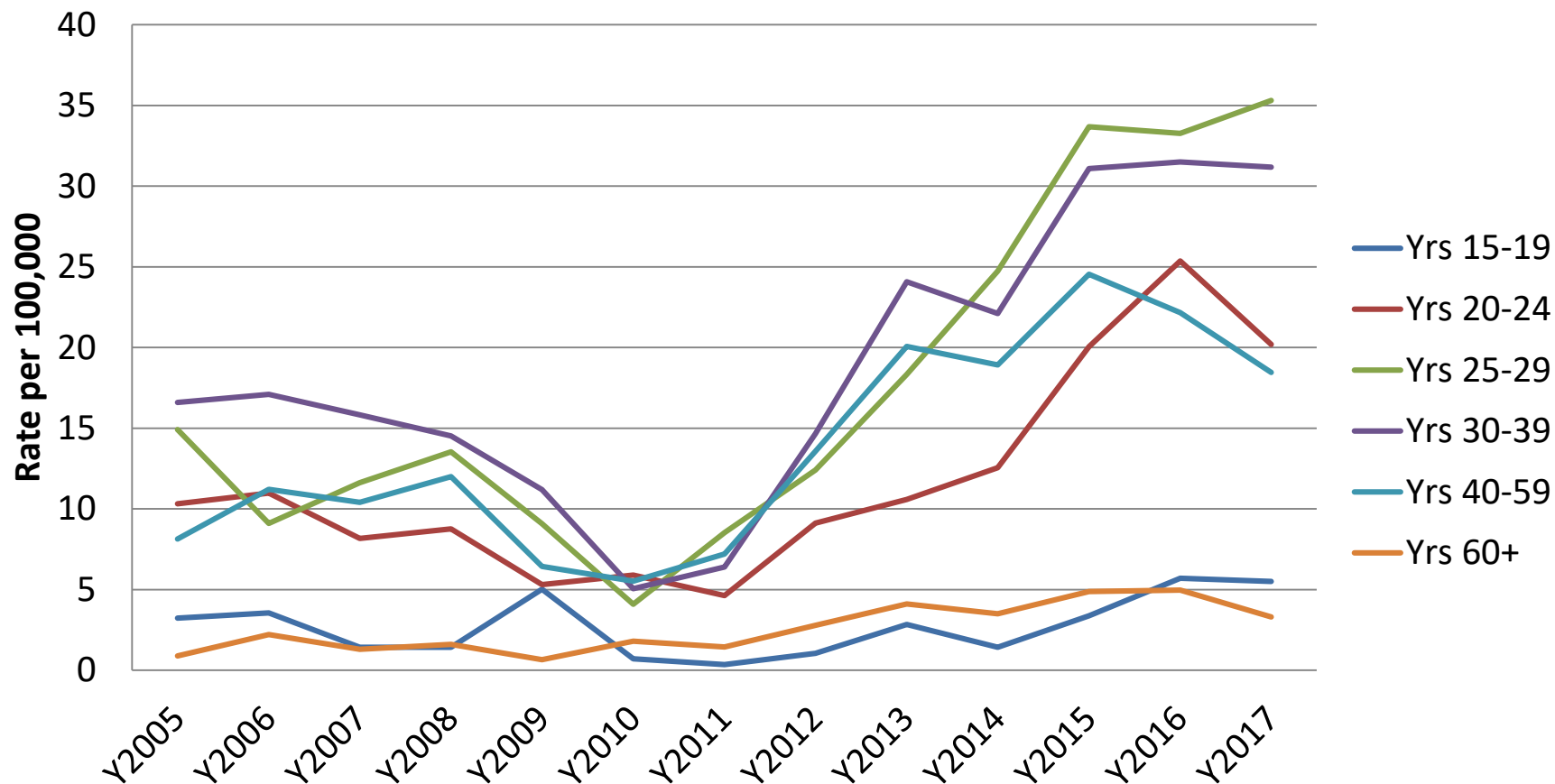
Syphilis Cases, BC



Syphilis Rates by RHA

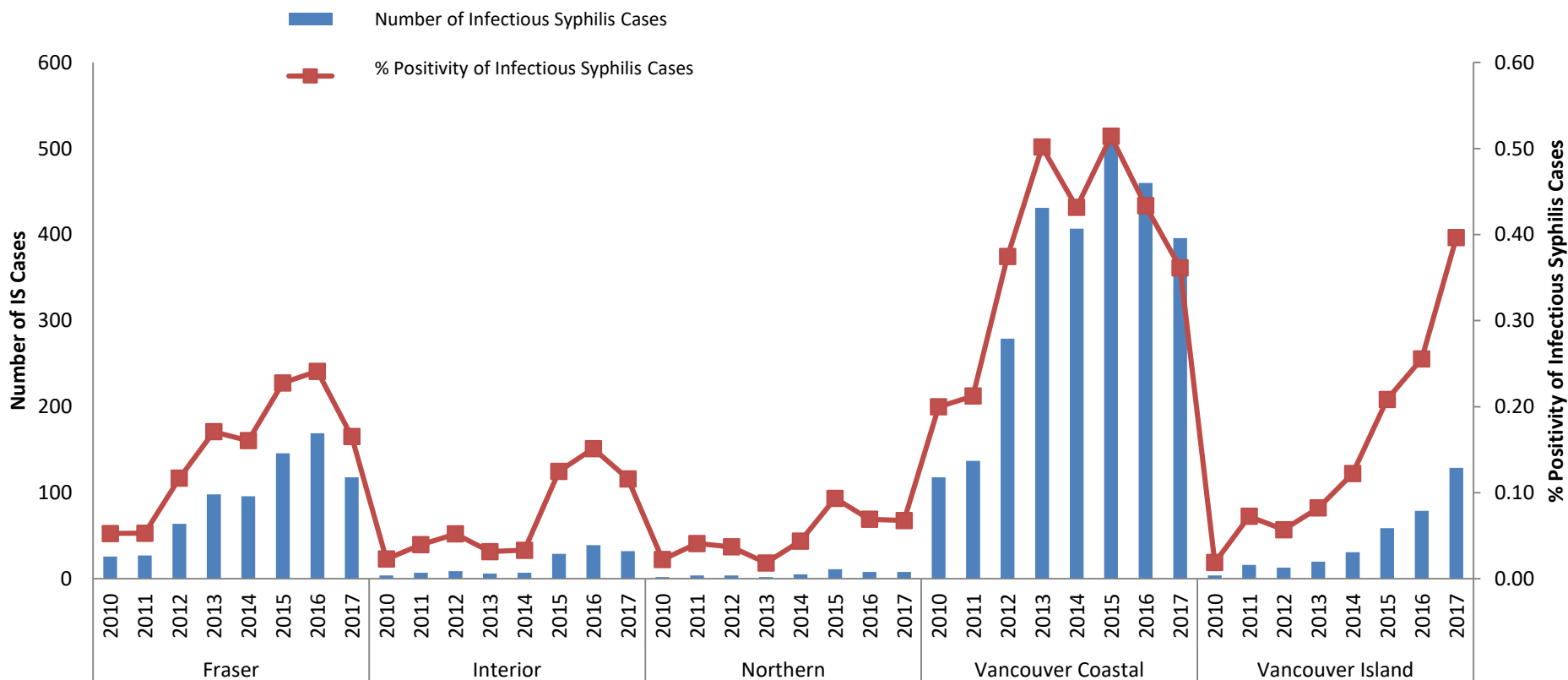


Syphilis Rates by Age

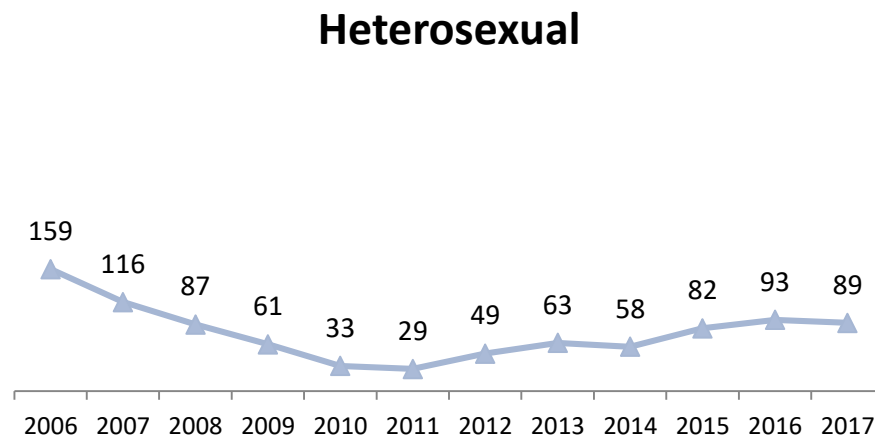
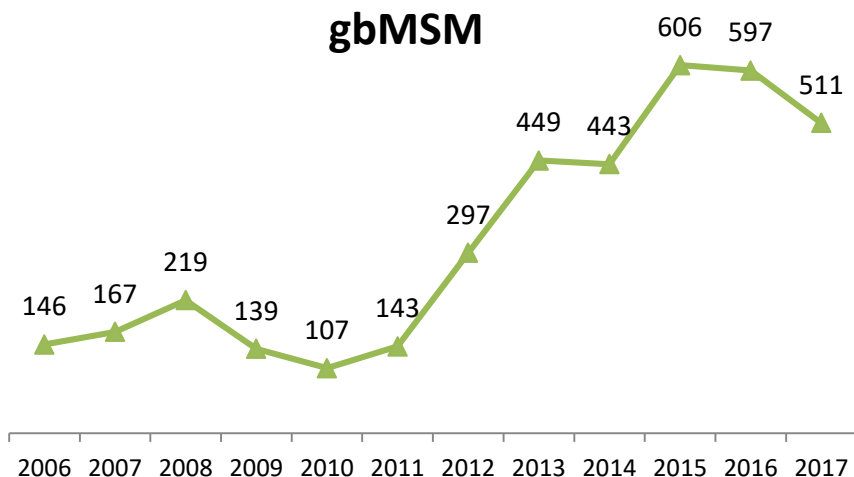


Syphilis Rates by RHA

Number of Infectious Syphilis Cases vs. Percent Positivity, by Health Authority, 2010-2017



Syphilis Cases by Risk Group



Foreign Acquired *:

In 2017 among the 685 syphilis cases -

- 25 cases reported meeting partners outside of Canada (vs. 34 cases in 2016)
- 7 cases reported meeting partners in Canada, but outside of BC (vs. 9 cases in 2016)

Sex trade work *:

- 7 cases – reported meeting partners involved in sex trade work (vs 5 cases in 2016)

*Change in how data was collected starting in 2016 – no historical data

HIV/Syphilis Co-infection

	2017		2016	
	Cases	Proportion	Cases	Proportion
HIV Negative	374	54.7	434	57.2
HIV Positive	244	35.7	286	37.7
No HIV Test	38	5.6	38	5.0
Unknown	28	4.1	1	0.1

Neurosyphilis

- 33 cases (2017) vs. 38 cases (2016)

Ocular syphilis

- 8 cases in 2017, compared to 13 cases in 2016
- (Note: 2017 number *could be an under-estimate because it relies on regular reporting; unlike in 2016 where a chart review was completed to identify ocular syphilis cases in BC*).

Congenital syphilis

- No cases (last case in 2014)
- Other jurisdictions are reporting congenital syphilis cases



BC Centre for Disease Control

An agency of the Provincial Health Services Authority

Questions?

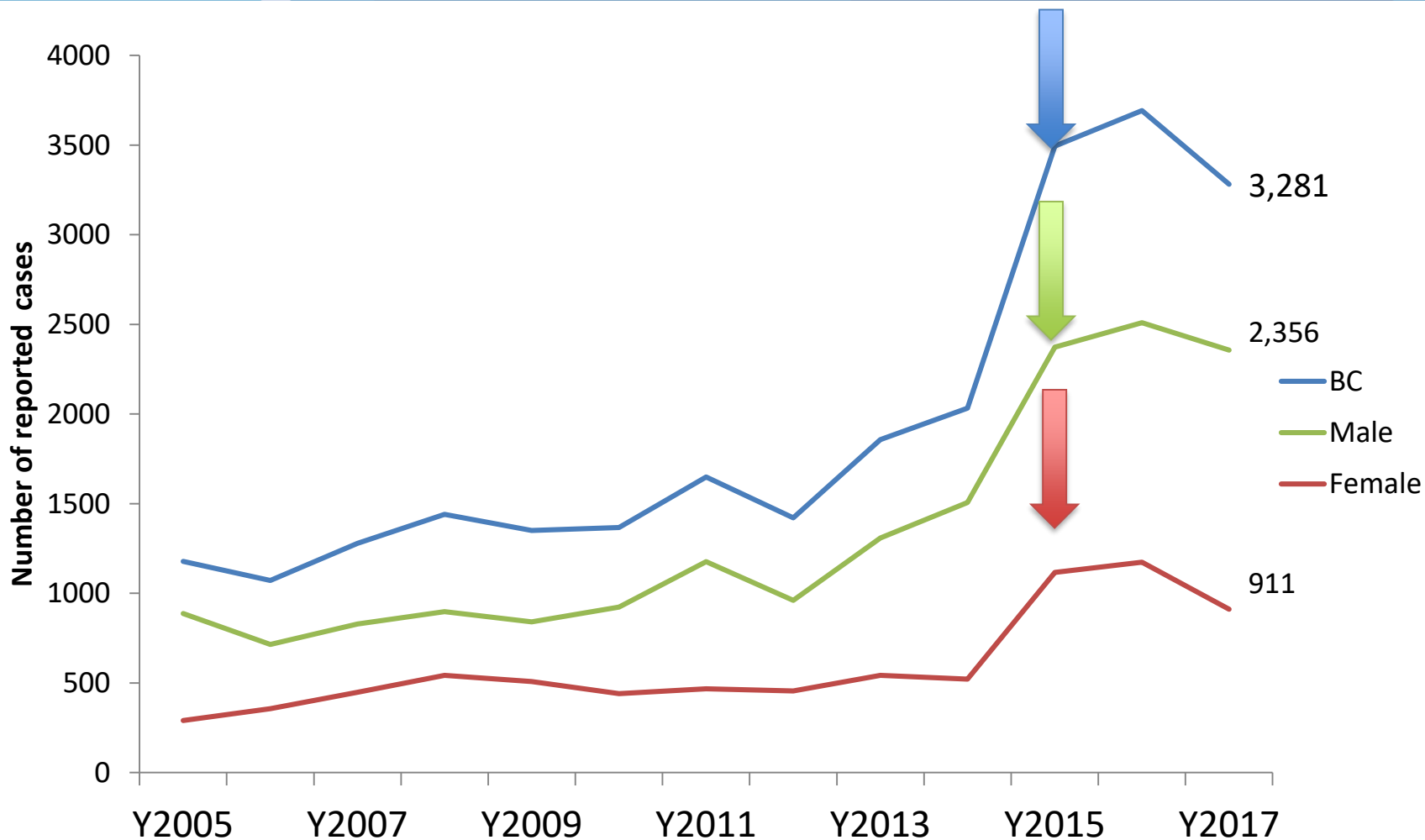
jason.wong@bccdc.ca



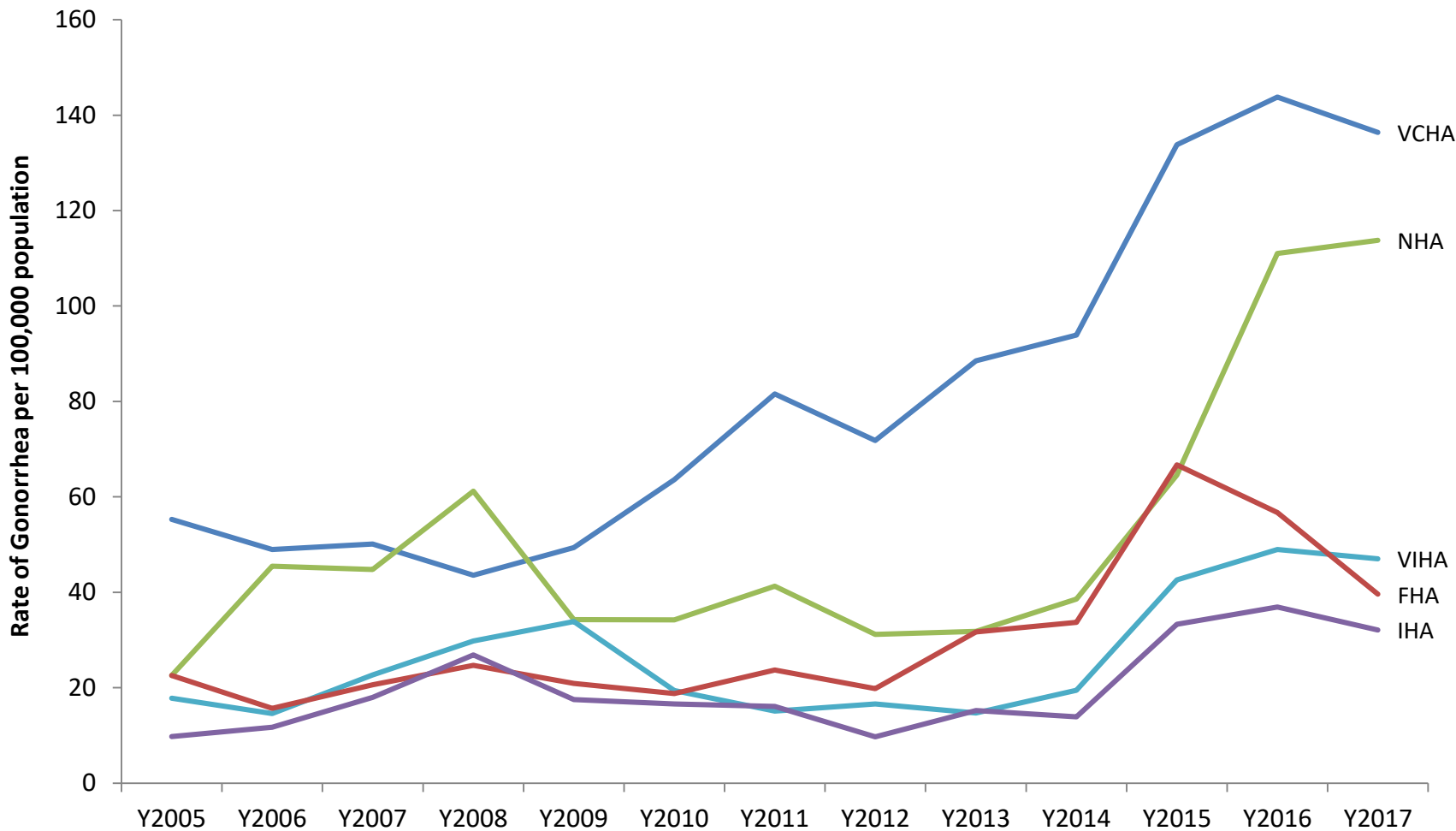
BC Centre for Disease Control
An agency of the Provincial Health Services Authority

Gonorrhoea

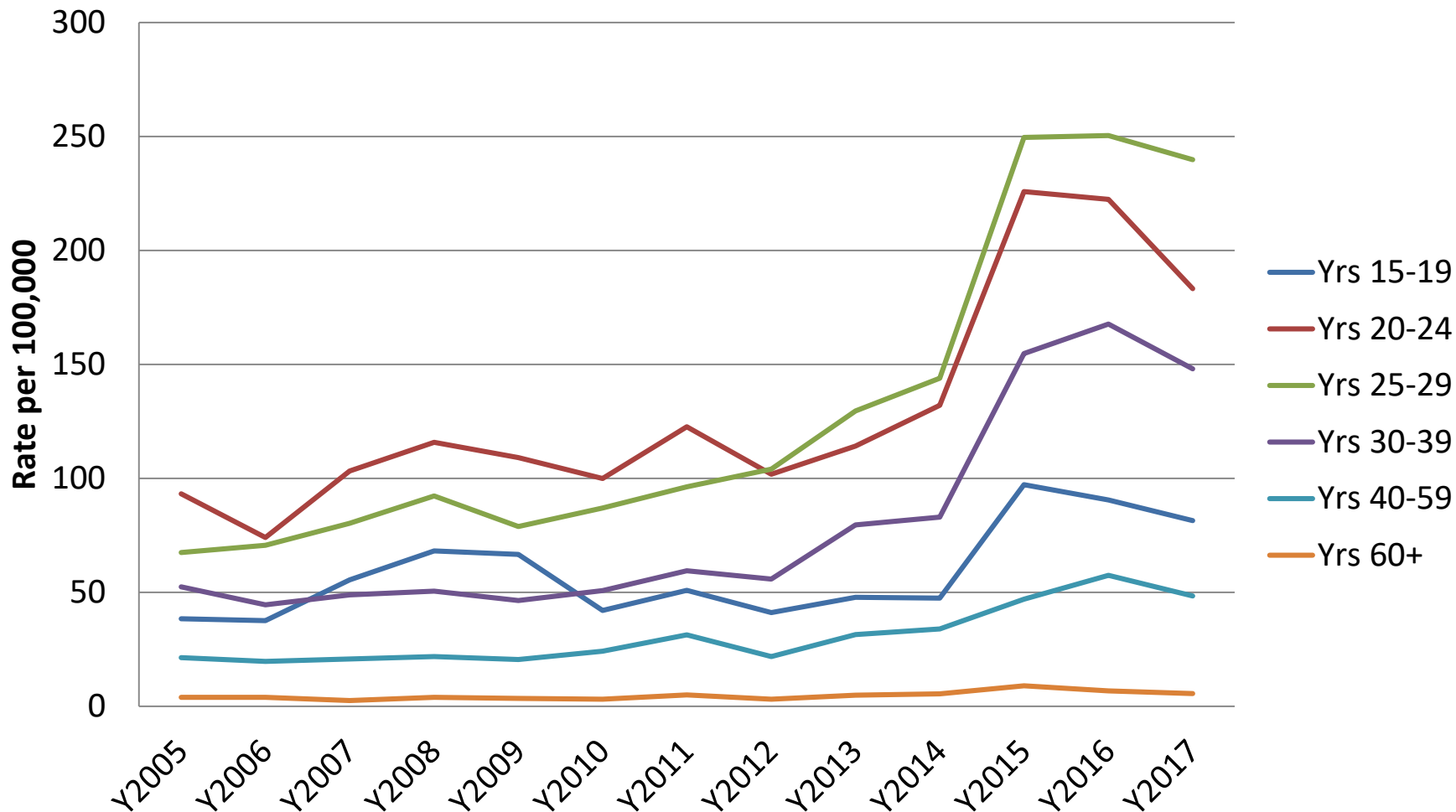
Gonorrhoea Cases BC



Gonorrhoea Rates by RHA



Gonorrhoea Rates by Age

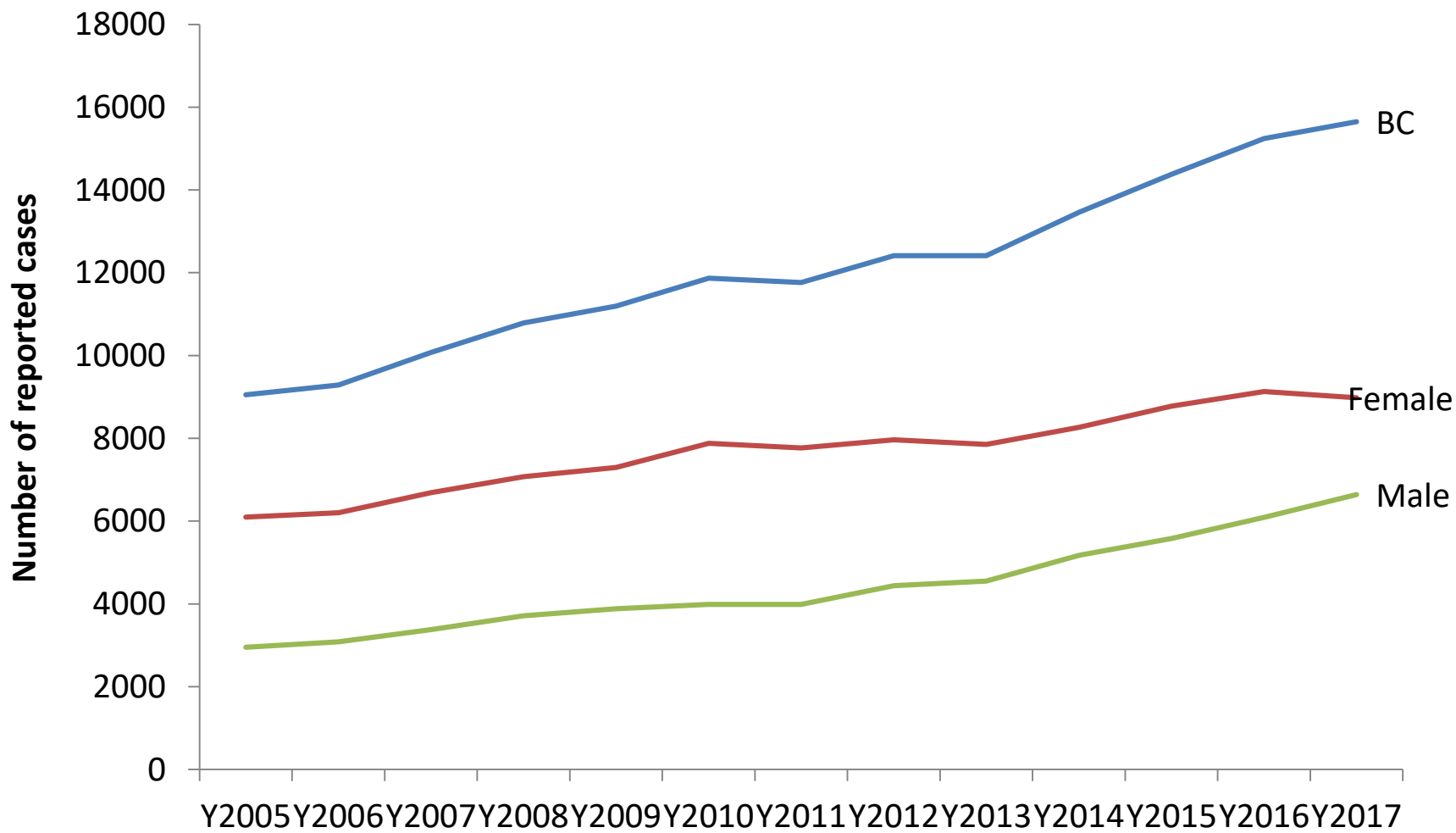




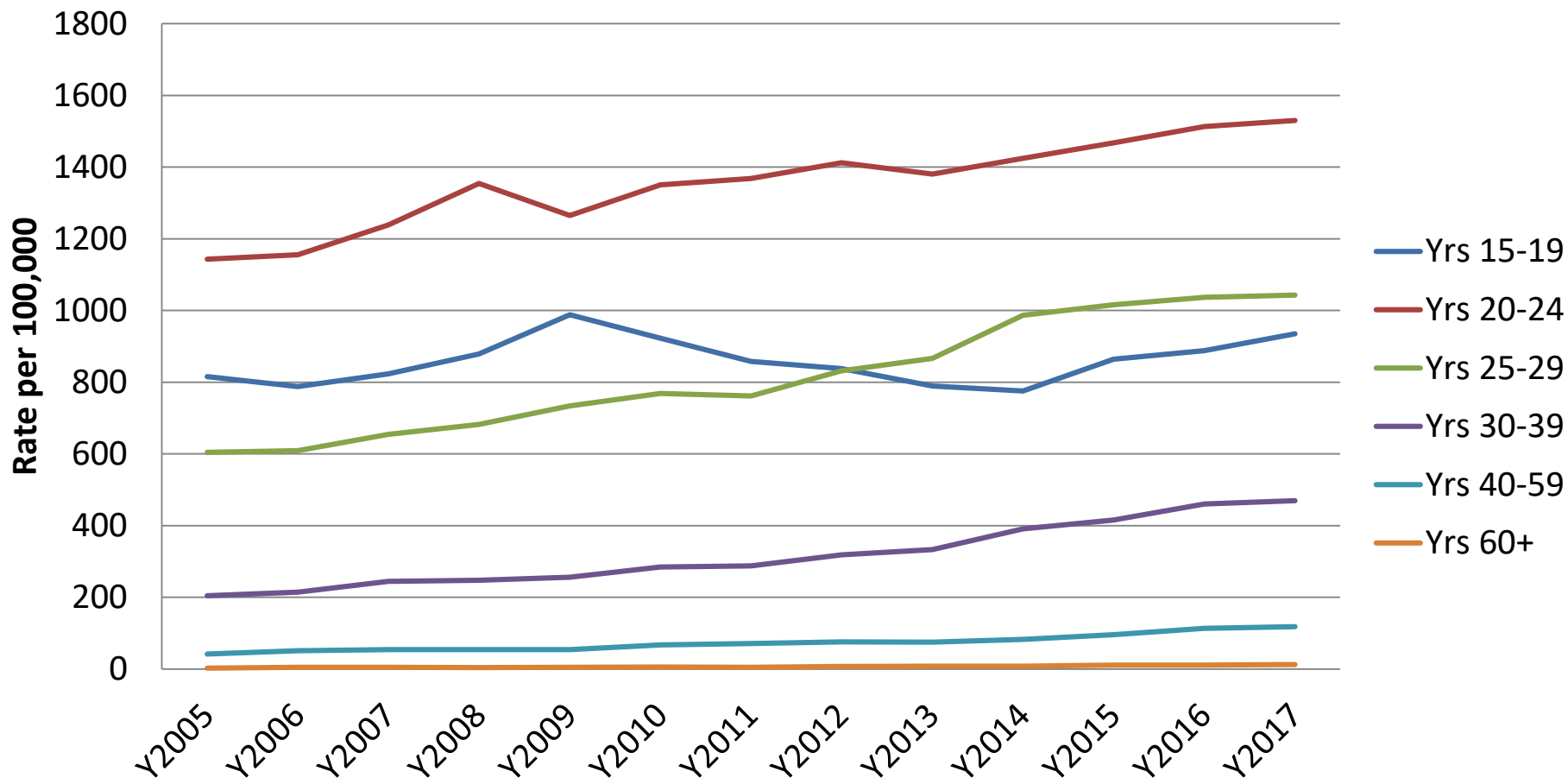
BC Centre for Disease Control
An agency of the Provincial Health Services Authority

Chlamydia

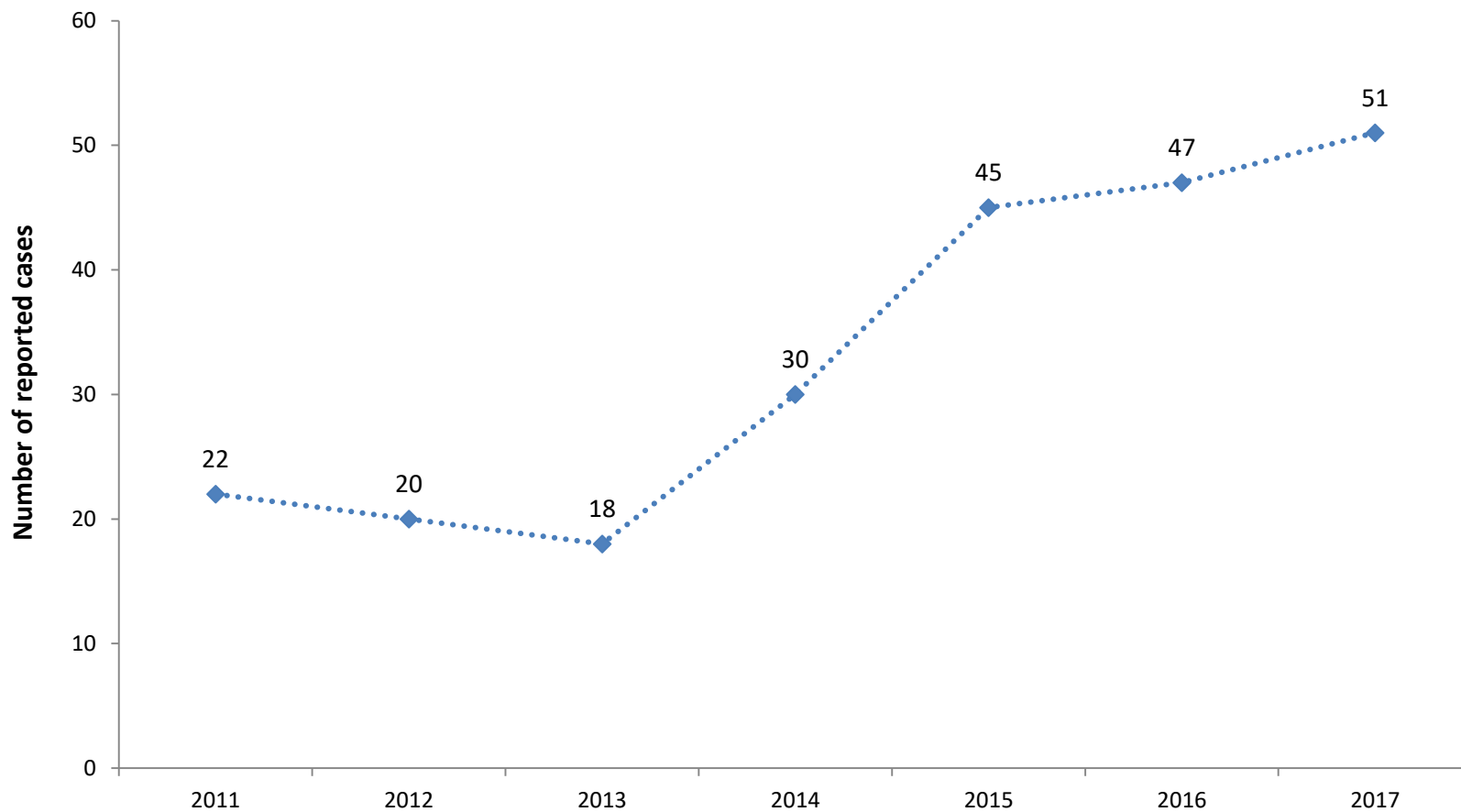
Chlamydia Cases BC



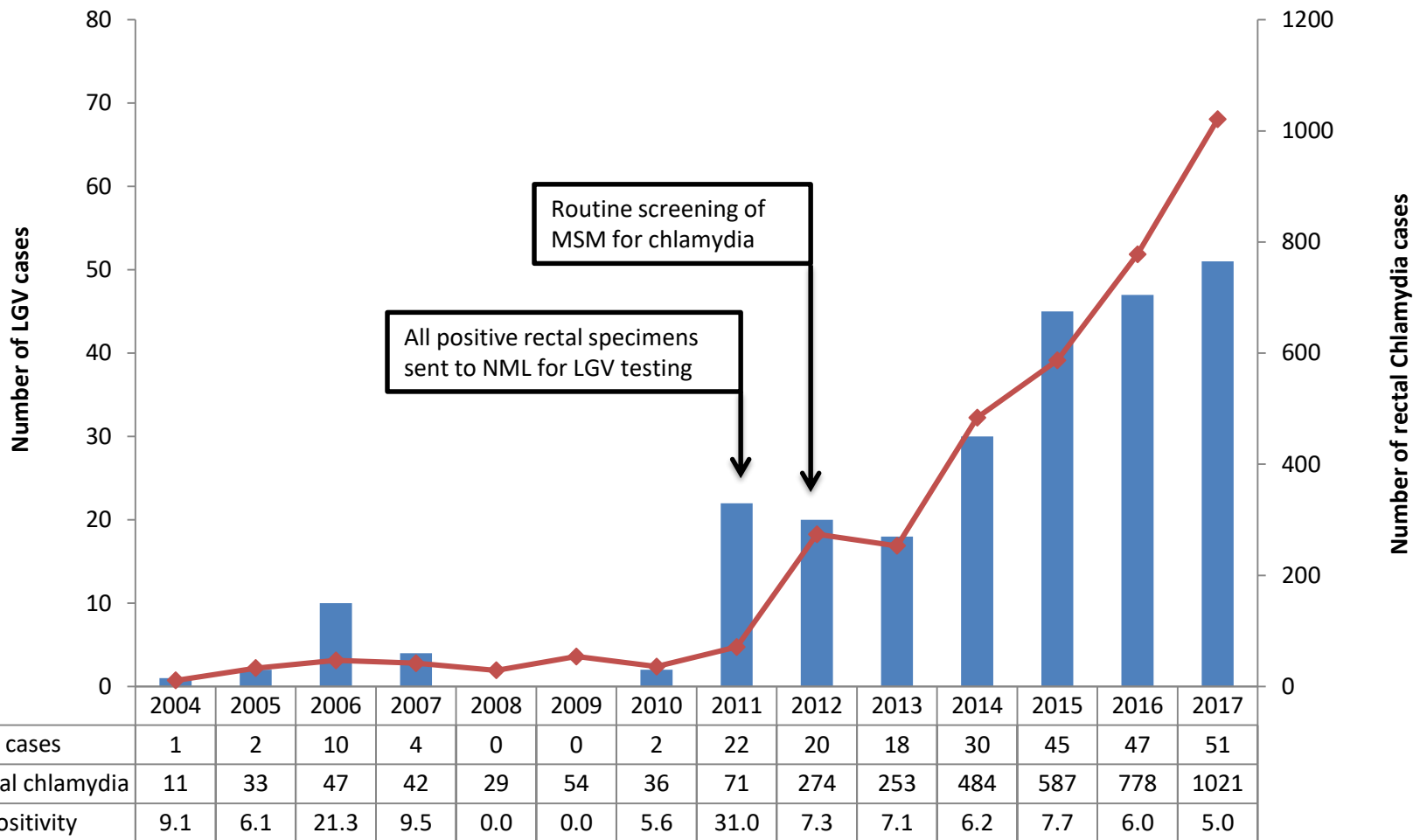
Chlamydia Rates by Age



LGV Cases, 2011-2017



LGV in BC (continued)

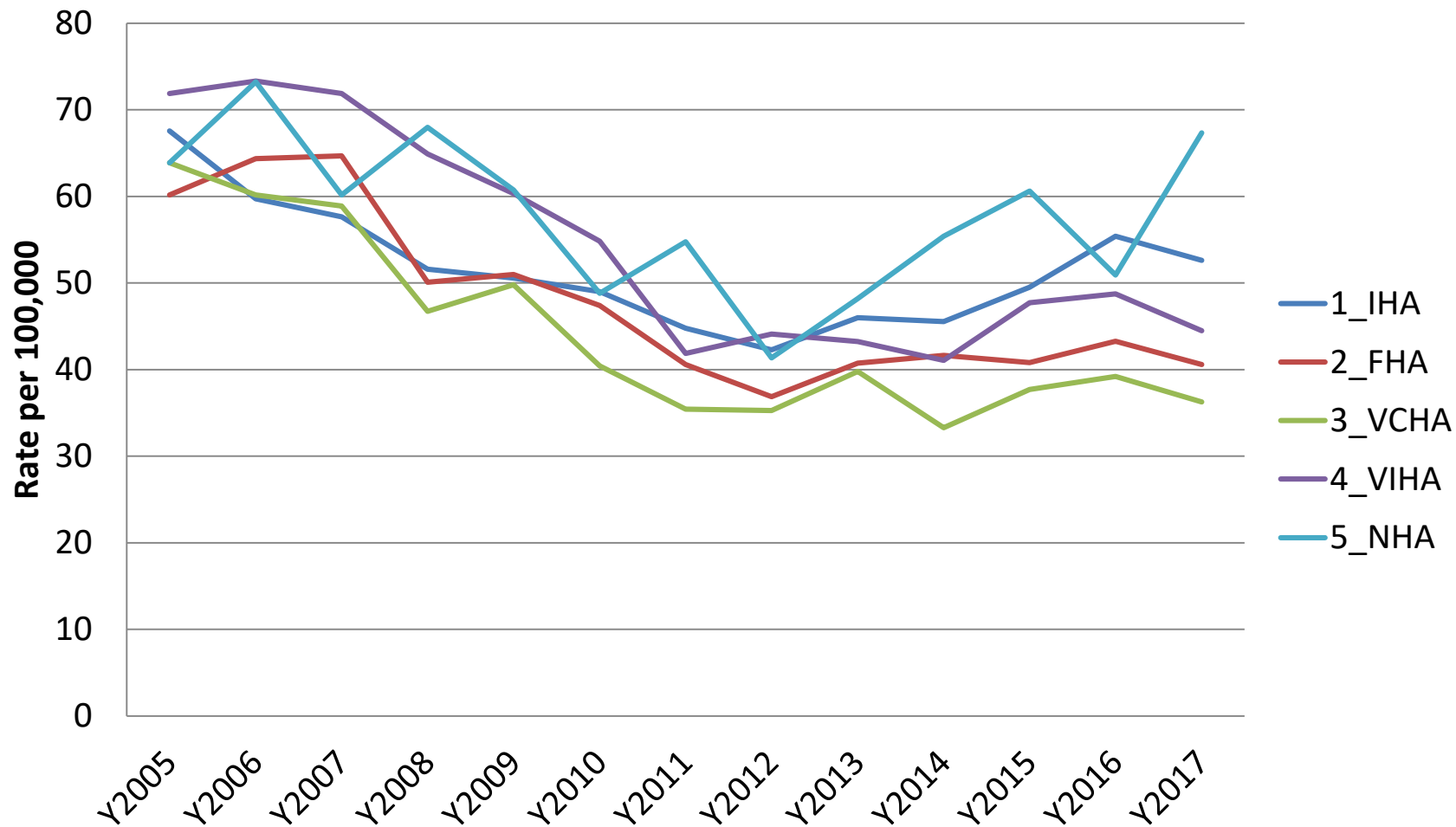




BC Centre for Disease Control
An agency of the Provincial Health Services Authority

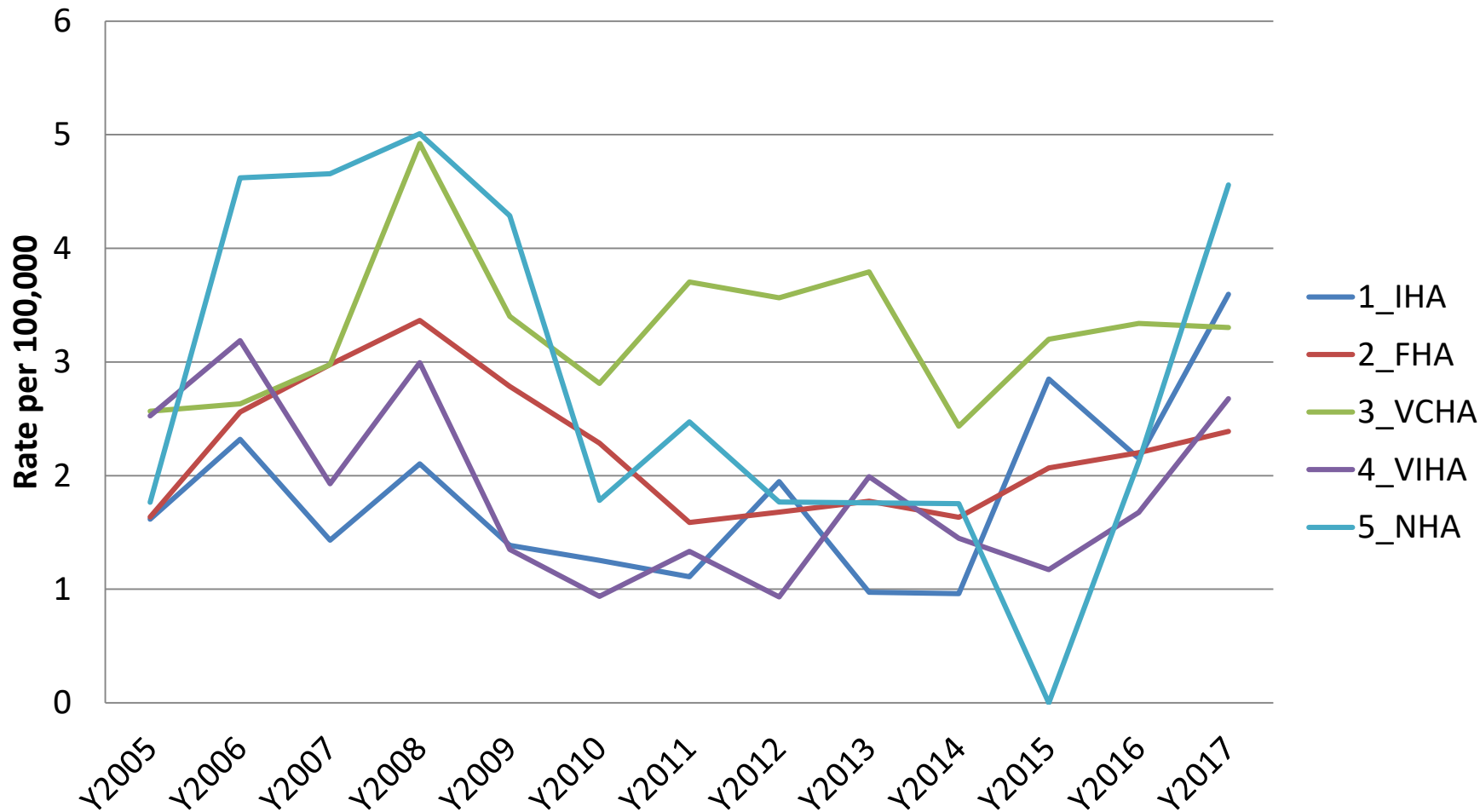
HCV by RHAs

HCV Incidence by RHA



* Preliminary data, subject to change

Acute HCV Incidence by RHA



*Preliminary data, subject to change