



Participatory Approach to Evaluation:

Democratizing Evaluation and Embodying Social Inclusion

CESBC CONFERENCE – NOVEMBER 30, 2018

MONA LEE, JANICE DUDDY, PAUL KERBER

**LATER IN PRESENTATION WE ARE GOING TO USE MENTIMETER
FOR SOME REAL-TIME VOTING – IN PREP**

GO TO: MENTI.COM CODE: 28 12 29

Have you ever used a participatory evaluation approach?

REAL TIME VOTING

Go to: **menti.com**

CODE: 28 12 29

Pacific AIDS Network: Overview



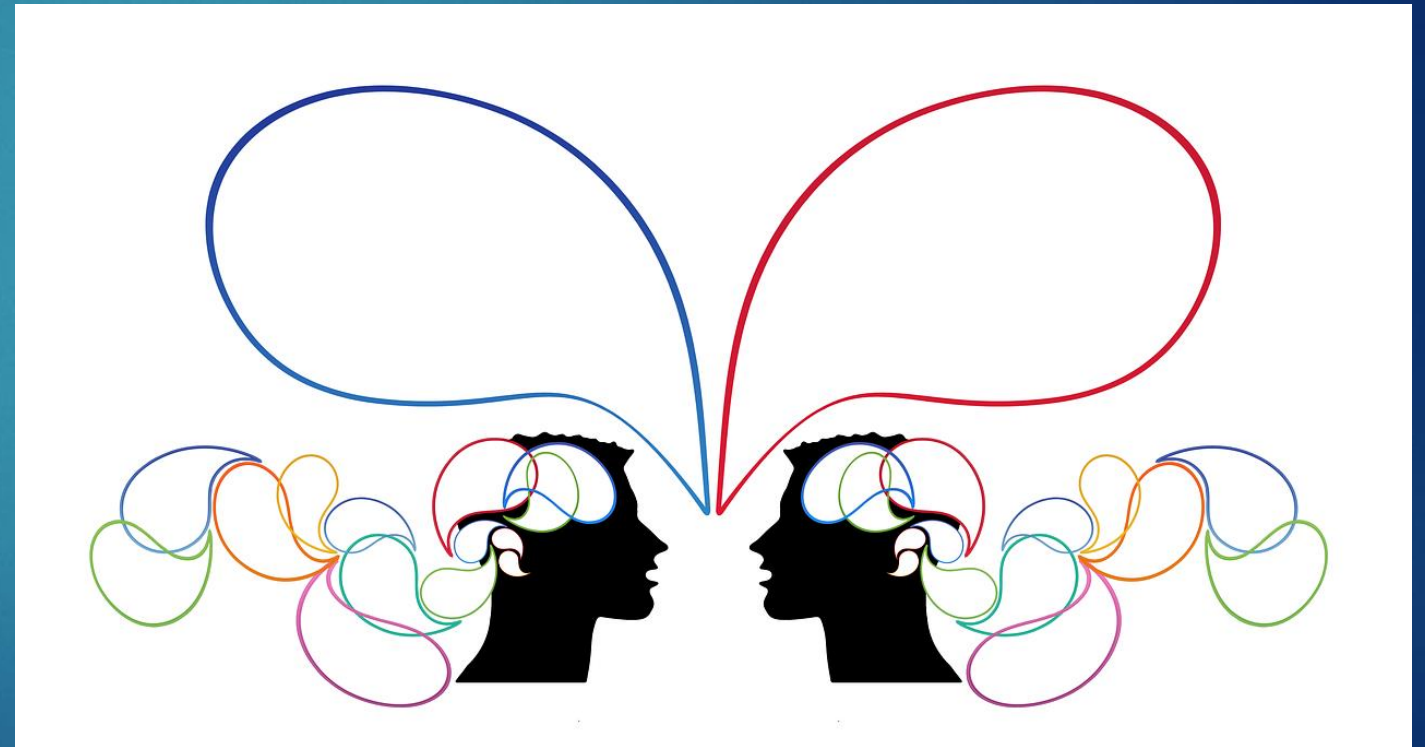
Who are we?

Provincial network of 40+ member organizations who work across BC to respond to HIV, hepatitis C and related conditions




Community-Based Research and Evaluation Department

- ▶ Some similarities between community-based research (CBR) and evaluation
- ▶ Mutual learning and adaptation between approaches within our department



Greater Involvement of People Living with HIV/AIDS (GIPA) & Meaningful Engagement of People Living with HIV/AIDS (MEPA)

Principle that all HIV programs and services strive towards



UNAIDS
JOINT UNITED NATIONS PROGRAMME ON HIV/AIDS

UNHCR
UNICEF
UNEP
UNFPA

IMDRC
ILO
IAESD
WHO
WORLD BANK

POLICY BRIEF

The Greater Involvement of People Living with HIV (GIPA)

Context

Nearly 40 million people in the world are living with HIV.¹ In countries such as Botswana and Swaziland, people living with HIV make up a quarter or more of the population.

People living with HIV are entitled to the same human rights as everyone else, including the right to access appropriate services, gender equality,² self-determination and participation in decisions affecting their quality of life, and freedom from discrimination³.

at the 2006 High Level Meeting on AIDS also advocated the greater involvement of people living with HIV.

Why GIPA?

People living with HIV have directly experienced the factors that make individuals and communities vulnerable to HIV infection—and once infected, the HIV-related illnesses and strategies for managing them. Their involvement in programme development and implementation and policy-making will improve the relevance, acceptabil-

What is Participatory Evaluation?

“Participatory evaluation ... isn't simply a matter of asking stakeholders to take part. Involving everyone affected changes the whole nature of a project from something done for a group of people or a community to a partnership between the beneficiaries and the project implementers. Rather than powerless people who are acted on, beneficiaries become the copilots of a project, making sure that their real needs and those of the community are recognized and addressed. Professional evaluators, project staff, project beneficiaries or participants, and other community members all become colleagues in an effort to improve the community's quality of life.” (*Community Toolbox: Participatory Evaluation*)



PAN's Definition and Implementation of Participatory Evaluation

- ▶ Collaborative, change-oriented and inclusive
- ▶ Built in supports
- ▶ Capacity bridging
- ▶ Built on mutual respect and trust
- ▶ Long-term and sustainable relationships
- ▶ Flexible
- ▶ Builds on community strengths
- ▶ Methodological rigor and sound ethical practices



Some benefits of using this approach includes:

- ▶ Community- and team-building
- ▶ Shared ownership of process and results
- ▶ Enhanced utilization of evaluation findings
- ▶ Democratize evaluation
- ▶ Social Inclusion



Positive Leadership Development Institute (PLDI)



**Positive Leadership
Development Institute™**

PLDI is a leadership training program
for people living with HIV (PLHIV)

GIPA/MEPA (Greater involvement of
People Living with HIV / Meaningful
Engagement of PLHIV) are at the centre
of PLDI, PAN and the greater HIV sector



PLDI Participatory Impact Evaluation

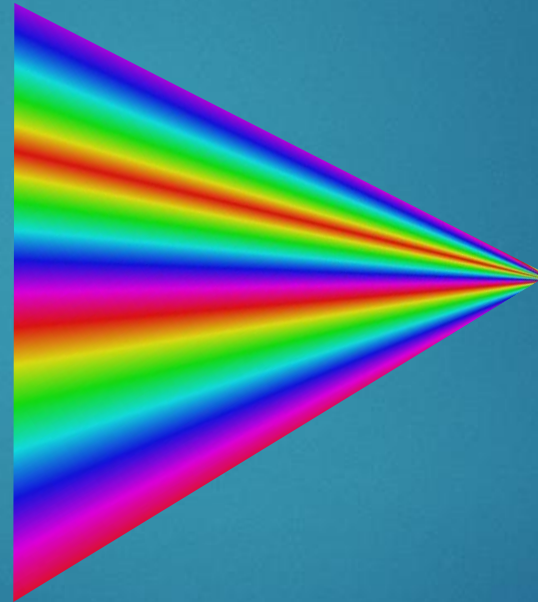
Funder-mandated evaluation

of

A capacity-building program for
people with lived experience

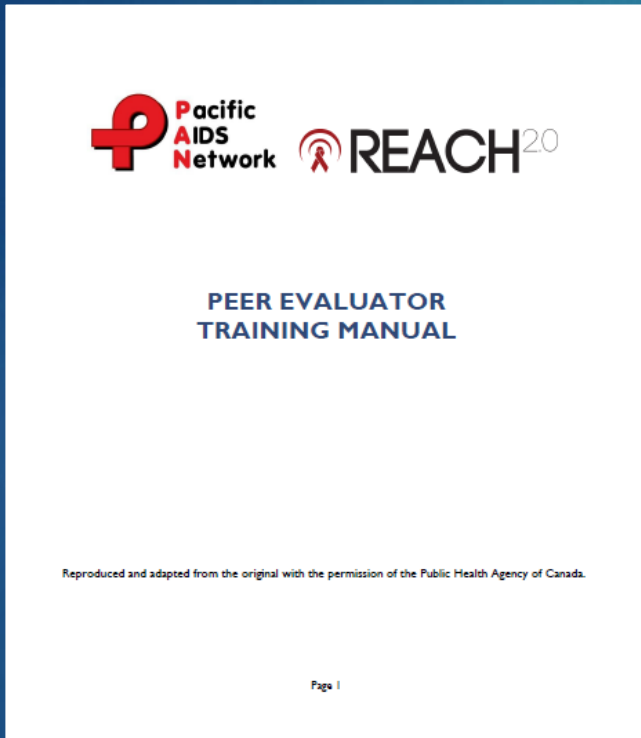
in

An organization that values and
embodies highly participatory
approach



Peer-led participatory
evaluation!

We have accomplished this by:



- ▶ Evaluation Steering Committee
- ▶ Hiring, training and working with Peer Evaluators
- ▶ Ensuring Peer Evaluators take on leadership roles
- ▶ Fairly compensating Peer Evaluators
- ▶ Building in ongoing support system for Peer Evaluators from the PAN staff

What are Peer Evaluators?



Peer Evaluator Accomplishments...



What do evaluation nerds do? Evaluate the evaluation!



Using a meta-evaluation to:

Reflect on engaging in a
Participatory Evaluation
approach...

Findings from Meta-Evaluation:



BENEFITS

(of engaging in participatory evaluation)

- Value of lived experience
- Improved recruitment
- Critical thinking
- Building relationship & trust
- Capacity and skills building for all
- Empowerment
- Shared ownership

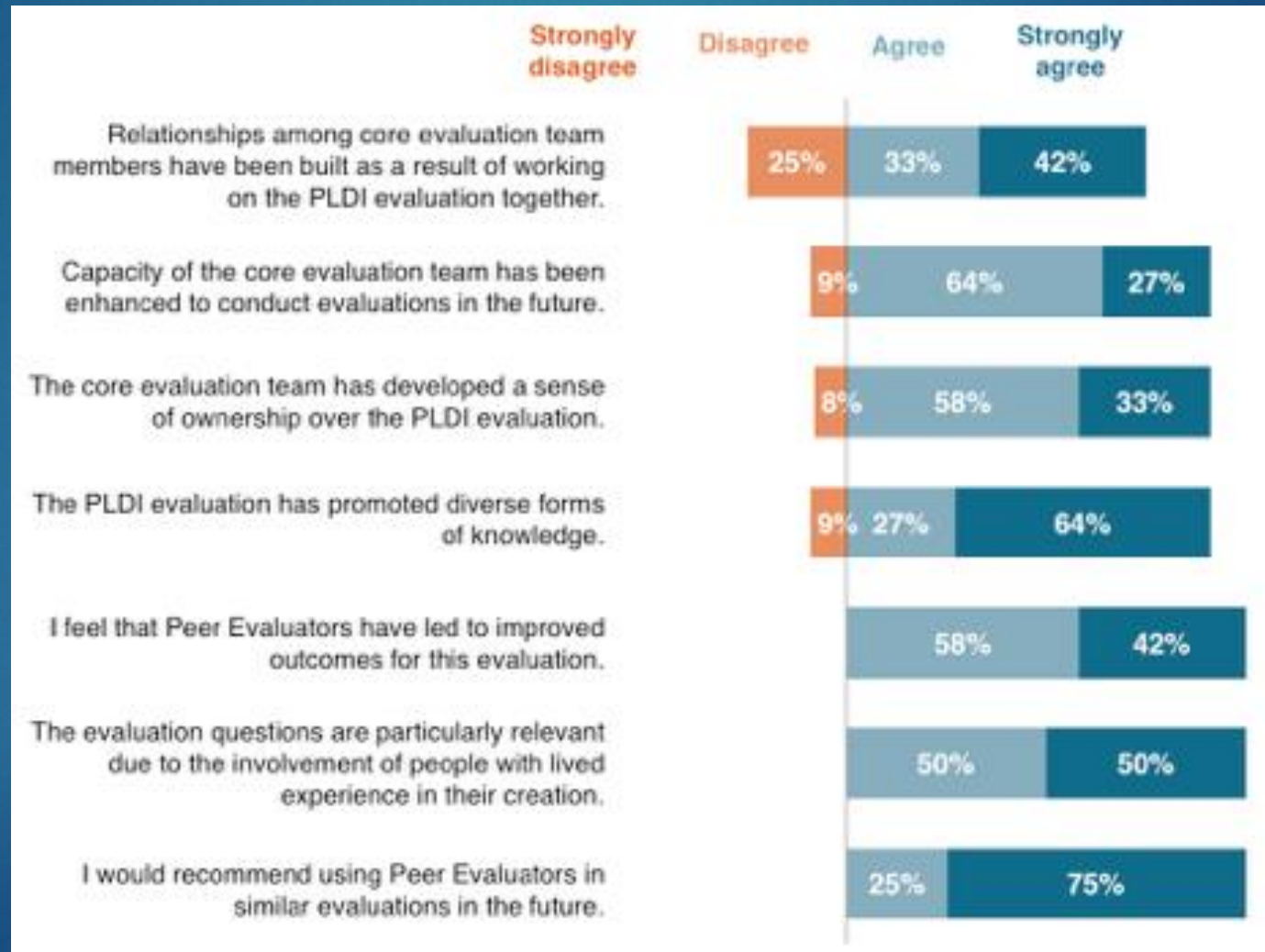


COSTS



- Added time and resources
 - Human resources
 - Training Peer Evaluators
 - Compensation for Peer Evaluators and Steering Committee members
- Working with a geographically-spread out team

Survey respondents' level of agreement with statements assessing the benefits of adopting a participatory evaluation involving Peer Evaluators (n = 11 to 12)



What questions do you have at this point?

REAL TIME VOTING

Go to: **menti.com**

CODE: 28 12 29

Small Group Exercise: Building a Participatory Evaluation Checklist

- ▶ Get into groups three
- ▶ Use the checklist worksheet to discuss (10 mins):
 - ▶ What do you need to be successful using a participatory evaluation approach? (See sub categories)
 - ▶ When would using a participatory approach to evaluation be harmful or detrimental? Why?

PAN's Participatory Evaluation Checklist

PAN's Checklist:

What do you need to have in place in order to be successful using a participatory evaluation approach?



Who should lead the evaluation?

People who are most affected by the program and its evaluation should lead the evaluation

- Ask yourself – who is in the best position to advocate to ensure that the evaluation beneficiaries and stakeholders are actively engaged in all aspects of the evaluation?
- Considering hiring Peer Evaluators – Peer Evaluators are people with lived experience of the target group or beneficiaries of the evaluation. Peer Evaluators should have a strong interest in evaluation and may or may not have experience with conducting an evaluation. Peer Evaluators could lead the evaluation (hired as contractors or full- or part-time employees), co-lead an evaluation with an internal or external evaluator and provide support and leadership expertise to an internal or external evaluator, or engage at any stage in the evaluation process.
- If Peer Evaluators are novice evaluators, it is essential to have an individual or a team member with evaluation experience to support learning, training and to be available in a mentor or coaching role to the Peer Evaluators.
- Peer Evaluators must be fairly compensated for their time and effort.

OUR EXPERIENCE: For PAN's Positive Leadership Development Institute (PLDI) Participatory Impact Evaluation, people living with HIV (PLHIV) led the evaluation as Peer Evaluators. Peer Evaluators received support, training and coaching from PAN staff with evaluation experience throughout the whole project. An evaluation steering committee consisting of representatives from key stakeholder groups helped guide the overall evaluation process.

Who are your evaluation stakeholders? Who needs to take part in the evaluation?

Ensure stakeholder diversity

- Ask yourself – who are the people this program is trying to serve; who are the partners or organizations playing an active role in our work; who are the funders of the program; who are the staff of the program; are there other people key to our work? These are the people who should be actively engaged in your evaluation.
- Having a diverse group at the table provides a wider scope of knowledge and experience at all steps of an evaluation. It increases critique and reflection of the evaluation process and method, and allows the evaluation to ask more comprehensive questions. Finally, it maximizes the use and sharing of findings, and ensures a more effective and rigorous evaluation process and outcomes.

Clearly define roles and encourage open communication

- When shifting to more participatory approach, team members may have to step out of traditional roles and learn to share power. Partners with evaluation expertise may need let go of control and take on a supportive coaching role, making space for evaluation beneficiaries to take on leadership roles.
- With a role shift, open communication becomes even more critical to ensure meaningful participation from all members of the evaluation team.

OUR EXPERIENCE: PAN's PLDI Participatory Impact Evaluation stakeholders included: people who participated in the PLDI program; PLDI program staff and other PAN staff with evaluation experience; community partners (i.e. community-based organizations who support people living with HIV to participate in the PLDI program; organizations who engage and hire graduates of the PLDI program); and funders. At least one representative from each of these stakeholder groups participated as a member of Evaluation Steering Committee. PAN staff with evaluation expertise let go of control and took on a supportive coaching role; while Peer Evaluators took the lead on the project and the Evaluation Steering Committee provided guidance and governance support.

We will have copies for you or you can find it on our website:

<https://pacificaidnetwork.org/2018/11/27/pan-presents-at-the-2018-cesbc-conference-on-participatory-approaches-to-evaluation/>

Questions??

Acknowledgements

PAN wishes to thank the Public Health Agency of Canada (the views expressed herein do not necessarily represent the views of the Public Health Agency of Canada) and REACH 2.0 for the financial support to conduct this impact evaluation.

The impact evaluation presented here was designed by a Steering Committee comprised of people living with HIV (PLHIV), key stakeholders, PAN staff and contractors, as well as a team of four Peer Evaluators hired to conduct this project. A big thank you to this team and to all the participants who contributed their time to this evaluation!

If you have questions or want to learn more please contact:

Janice Duddy – janice@pacificaidnetwork.org