
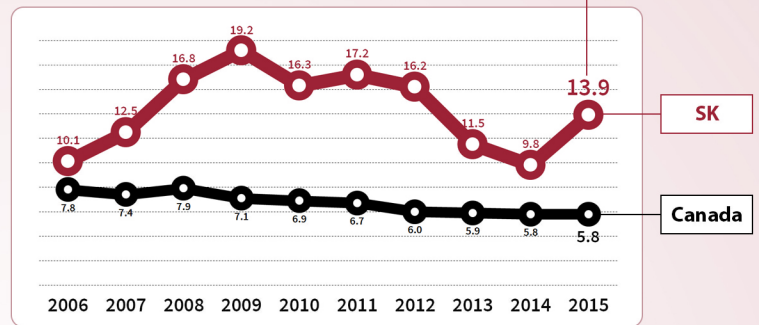
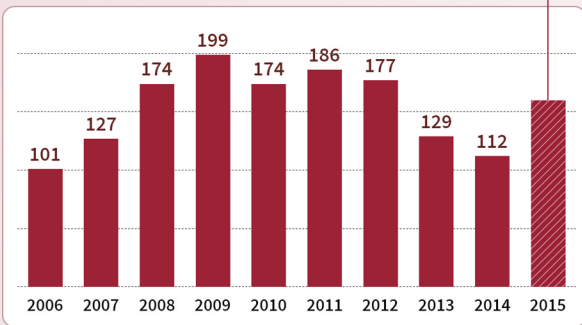


HIV & AIDS in Saskatchewan (2015)

 **160** persons with newly diagnosed HIV infection



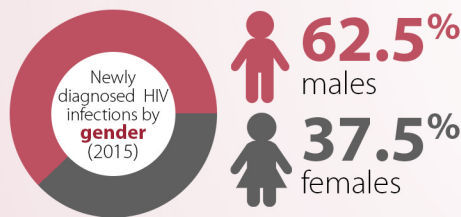
About **14 in 100,000** population



► The number of newly diagnosed persons **increased** after steady decline in the previous years

► SK's HIV diagnosis rate has been consistently **higher** than Canada since 2006, and was **2.4x** higher than the national rate in 2015

► **Males were more likely** than females to be diagnosed with HIV

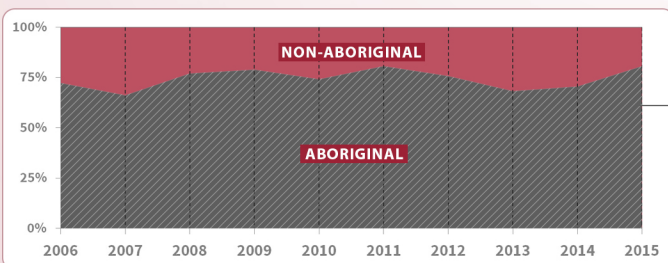


► About **9 in 10** of the newly diagnosed females were within the **childbearing age** (15-45 years)



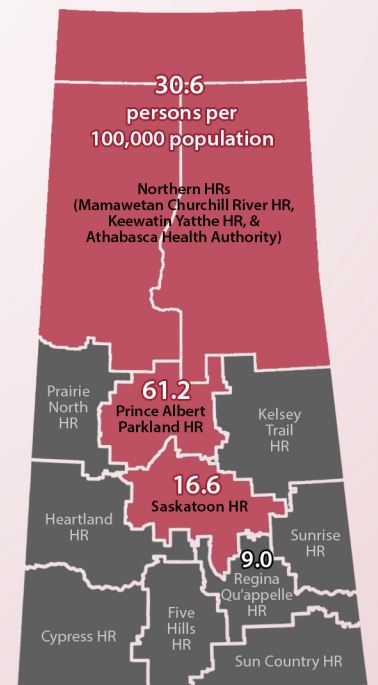
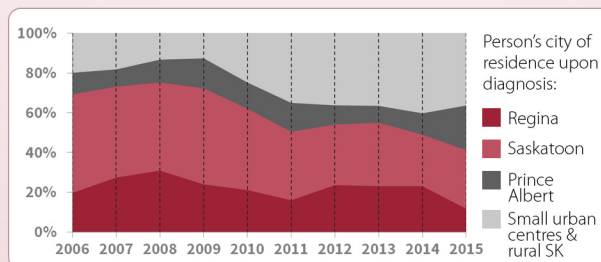
► Rates of newly diagnosed persons in **health regions (HR) vs SK**

■ higher than provincial rate
■ lower than provincial rate or reported no new infections

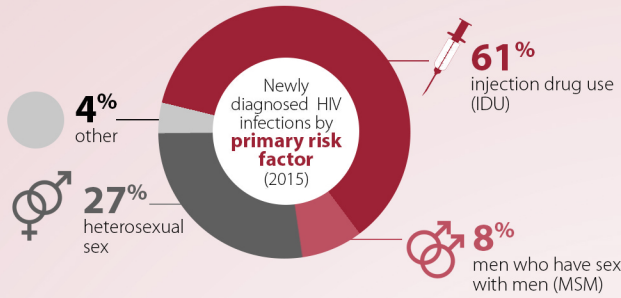


► Those who **self-identified as Aboriginal** remained the **most common** group of newly diagnosed persons

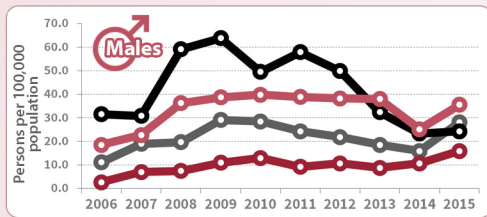
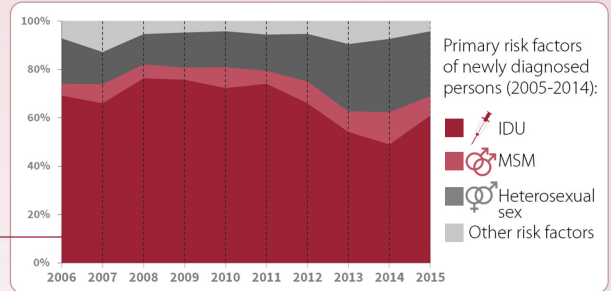
► **Majority** of newly diagnosed persons were **from the 3 large urban centres (Regina, Saskatoon, & Prince Albert)**, although the proportion coming **from rural areas increased** from 2010



► **Injection drug use (IDU)** remained the **most common reported primary risk factor** among newly diagnosed persons

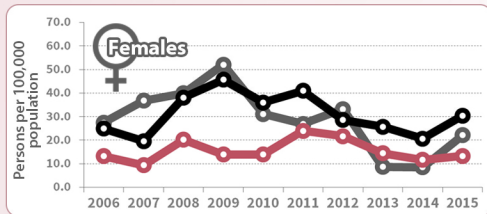


The number and proportion of newly diagnosed persons reporting IDU has **declined** since 2012, but **increased** again in 2015

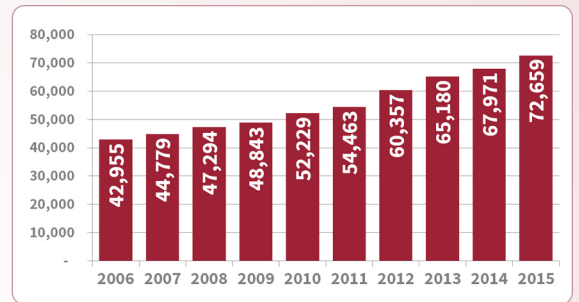


► HIV diagnosis rates **increased in both males and females** across age groups from 2015

► The **number of HIV tests** performed by the Saskatchewan Disease Control Laboratory (SDCL) **has increased 69%** from 2006 to 2015

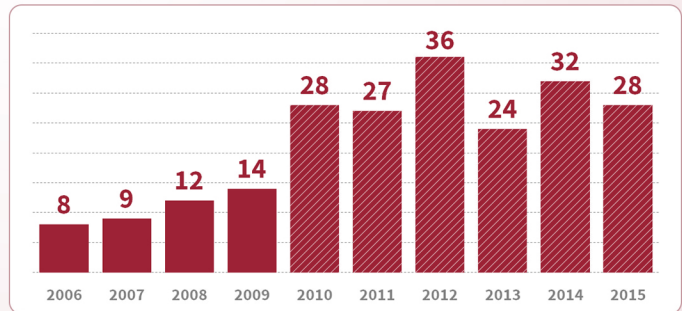


- 50+
- 40-49
- 30-39
- 20-29

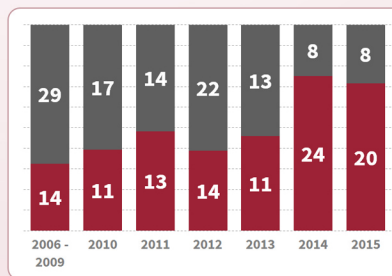


28 persons newly diagnosed with AIDS

► The number of people reported as having AIDS **increased** in the later half of the decade (2006-2015)



► **About 2 in 5 persons** newly diagnosed with AIDS this year were **diagnosed late** in their disease progression



► **Life status** of the persons newly diagnosed with AIDS by year of diagnosis in the past decade (2006-2015)

- Known Deceased
- Presumed Alive

NOTE: Delays occur in the reporting of HIV and AIDS data. As updated information becomes available, case data may be reassigned based on this information. As such, numbers may differ from previous reports or at the time of next year's report.