

Provincial HIV and HCV Collective Impact Network

2016 PAN Fall Conference

Presented By: J. Evin Jones

Backbone Support for Collective Impact Network

- ▶ PAN has signed a contract with the PHSA to provide backbone support in developing a provincial HIV and HCV Collective Impact Network focused on:
 - ▶ Working together in partnership with the PHSA
 - ▶ Developing a new collective impact network in BC
 - ▶ Exploring innovative ways to tackle the complex issues of HIV and HCV and the issues that surround them in BC
 - ▶ Facilitate conversations to strengthen relationships and communication between established players
 - ▶ Building partnerships and collaborations with organizations who we have not traditionally worked with
 - ▶ Supporting network capacity and skills building

What is Collective Impact?

From the [Collective Impact Forum](#): Too many organizations are working in isolation. Collective impact brings people together in a structured way, to achieve social change.

A very basic definition of collective impact is - the commitment of a group of actors from different sectors to a common agenda for solving a specific social problem, using a structured form of collaboration.

Collective Impact Video...

... Please enjoy

5+1 Components of a Collective Impact Network

- ▶ It starts with a **Common Agenda** - coming together to collectively define the problem and create a shared vision to solve it
- ▶ It establishes **shared measurement** - agreeing to track progress in the same way, which allows for continuous improvement
- ▶ It fosters **mutually reinforcing activities** - coordinating collective efforts to maximize the end result
- ▶ It encourages **continuous communication** - building trust and relationships among all participants
- ▶ It has a strong **backbone** - having a team dedicated to facilitate the work of the group
- ▶ **Prioritizing inclusive decision-making** - ensuring that those who have the greatest stake in the agenda are engaged in making decisions for the network, building on GIPA/MIPA and Nothing About Us, Without Us principles

What is the role of a Backbone Organization?

PAN does not drive the agenda, nor own, nor lead the process; our role is to further deepen and grow the conditions of Collective Impact. Roles of the Backbone include:

- ▶ Providing strategic guidance and vision to our members and allied organizations, and advocating for a common agenda
- ▶ Supporting aligned activities
- ▶ Working to support shared measurement practices and the sharing of data
- ▶ Building public will
- ▶ Advancing policy
- ▶ Mobilizing resources for the collective

PAN's current work linked with new Collective Impact focus and Backbone Support



CURRENT PROGRAMS & SERVICES

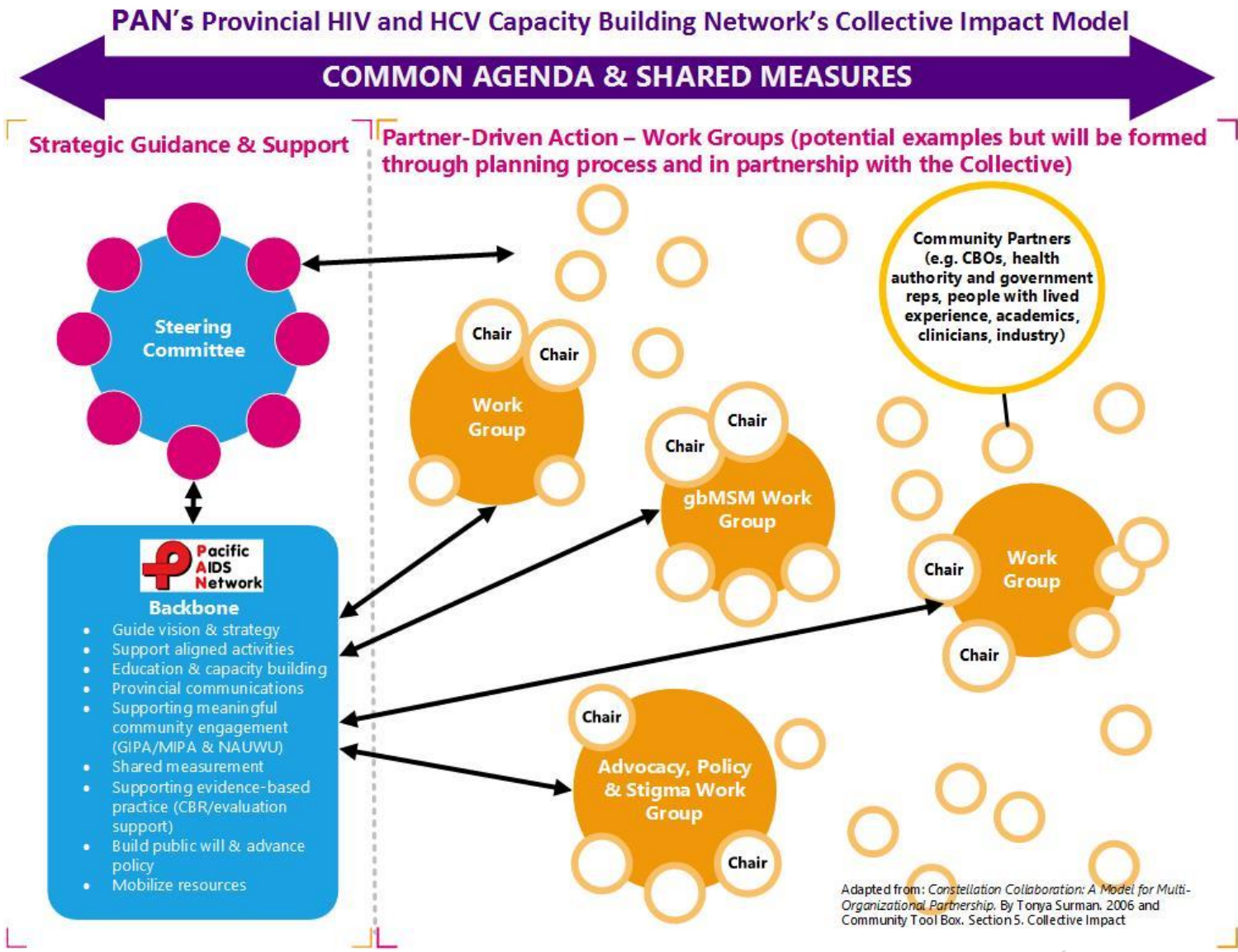
- Workforce Development and Provincial Capacity Building Program
- Positive Leadership Development Institute (PLDI)
- CBR and Evaluation Program
- Provincial Communications
- Provincial Collective Action



ENHANCED CI SERVICES & ACTIVITIES

- Guiding provincial vision and strategy
- Supporting aligned activities
- Enhancing provincial communications
- Increasing sectoral capacity for inclusive decision-making (GIPA/MIPA & NAUWU)
- Enhancing shared measurement
- Enhancing sharing of evidence
- Building public will & advancing policy
- Mobilizing resources

Proposed Model



Next Steps for PAN

- ▶ Learning and capacity building about Collective Impact - staff, board, other PHSA contractors, PAN's membership
- ▶ Year 1 - Planning year:
 - ▶ Building relationships
 - ▶ Setting common agenda
 - ▶ Determining structures and practices for working together
 - ▶ Building a shared measurement model