

CHANNELING CBR POTENTIAL

SETTING HIV/AIDS COMMUNITY-BASED RESEARCH PRIORITIES IN COMMUNITIES ACROSS CANADA



Duddy, Janice^{1,2} | Gaudry, Sonia³ | Hodge, Kellee^{3,4} | Hot, Aurélie^{3,5} | Langlois, Andrea^{2,3} | Peddle, Sarah^{3,6}
1. CIHR Centre for REACH in HIV/AIDS
2. Pacific AIDS Network
3. CIHR CBR Collaborative: A Program of REACH
4. Nine Circles Community Health Centre
5. COCQ-SIDA
6. Atlantic Interdisciplinary Research Network for Social and Behavioural Issues for Hepatitis C and HIV/AIDS

THE CIHR CENTRE FOR REACH IN HIV/AIDS

VISION

TO BRING TOGETHER CRITICAL PRACTICE, RESEARCH, AND POLICY SKILLS AS WELL AS THE LIVED EXPERIENCE OF PEOPLE LIVING WITH HIV/AIDS TO ENHANCE THE HEALTH OF INDIVIDUALS AND COMMUNITIES DISPROPORTIONATELY AFFECTED BY HIV/AIDS.

MISSION

TO PROVIDE THE CORE INFRASTRUCTURE SUPPORT REQUIRED TO ENGAGE COMMUNITY, POLICY MAKERS, AND RESEARCHERS IN INTERDISCIPLINARY TEAMS TO BREAK DOWN GEOGRAPHICAL, THEORETICAL, AND CONCEPTUAL BARRIERS AND TO SOLVE PROBLEMS IN THE USE, UPTAKE, AND IMPLEMENTATION OF RESEARCH EVIDENCE.



THE CIHR CBR COLLABORATIVE

THE CIHR CBR COLLABORATIVE, A PROGRAM OF REACH, IS A VIBRANT AND SUSTAINABLE NATIONAL COLLABORATIVE FOSTERING RIGOROUS, RELEVANT COMMUNITY-BASED RESEARCH THAT WILL IMPROVE THE HEALTH AND WELL-BEING OF PEOPLE AFFECTED BY HIV/AIDS ACROSS CANADA. IN ORDER TO STRENGTHEN REGIONAL PARTNERSHIPS AND COMMUNITY VOICE, THE CBR COLLABORATIVE CONDUCTS REGIONAL CONSULTATIONS TO IDENTIFY RESEARCH AND CBR CAPACITY BUILDING PRIORITIES ACROSS THE COUNTRY, CONSISTENT WITH THE VISION AND MISSION OF REACH. WE ENGAGE IN CONSULTATION METHODS THAT TAKE INTO ACCOUNT REGIONAL DIVERSITY INCLUDING LANGUAGE, PRIORITY POPULATIONS AND COMMUNITIES, GEOGRAPHIC DISPERSION OF TARGETED PARTICIPANTS AND REGIONAL HISTORIES OF COMMUNITY BASED RESEARCH.



Impact of Food Security on Health Outcomes in People Living with HIV/AIDS Across Canada (National)

The principal aims of this study are to examine and isolate the primary causes, context-specific risk factors, and the access barriers affecting food insecurity at individual and population levels. The study is also examining how food insecurity affects the clinical course of HIV disease, health outcomes and health-related quality of life, and survival.

« Dissemination grant: Nourishing communities (BC) » Nourishing Communities, the knowledge dissemination phase of the BC arm of the Food Security Study, will bring the project full circle. It will build capacity among team members to mobilize evidence, bring findings back to participating communities, contribute knowledge to academic venues, and will build momentum within the HIV/AIDS community to address a critical issue in the health and well-being for people living with HIV/AIDS in our province.

« Dissemination grant: Alimentons nos actions (QC) » Alimentons Nos Actions est une démarche de mise en action des données probantes afin de lutter contre l'insécurité alimentaire des québécoises et québécois vivant avec le VIH. Cette démarche est nourrie par des activités de dissémination locales organisées par les organismes communautaires et les pairs associés de recherche à l'intention des personnes vivant avec le VIH, des utilisateurs de connaissances communautaires et du réseau de la santé, des chercheurs, des décideurs, des bailleurs de fonds et d'autres partenaires aptes à appuyer des actions concertées à divers niveaux.

The National HIV and Housing Collaborative Blueprint for Integrated HIV, Housing and Health Services for People Living with HIV/AIDS in Canada (National)

In January 2012, over 35 stakeholders – housing providers, HIV service providers, researchers and policy makers from across Canada met to establish a national HIV and Housing collaborative, and draft a blueprint document with a vision and guiding principles for working together and strategies to move research into action. There are now three regionally-specific housing studies underway, including in Western Canada HIV Supported Housing in Western Canada: Mapping Services and in British-Columbia Positive Living, Positive Homes.

SOCIAL DETERMINANTS OF HEALTH

The Canadian HIV Stigma Index CBR Project (National)

Stigma continues to act as a profound stressor in the lives of people living with HIV/AIDS, negatively affecting care, treatment, and support. The proposed study, the first of its kind in Canada, will be a national CBR study that will implement The People Living with HIV Stigma Index in Canada as well as examine resilience factors that may reduce the negative impact of stigma and discrimination on the health and social well-being of people living with HIV/AIDS.

COMMUNITY CAPACITY BUILDING

Engaging Rural and Remote Communities (National)

« Moving Mountains in Northern BC (BC) » Moving Mountains is a CIHR-funded HIV CBR planning and capacity building project. In June 2014, the project will bring together community-based organizations, people living with HIV/AIDS, academic researchers, public health representatives, and other stakeholders to explore how knowledge can be moved to action in HIV/AIDS research.

« Manitoba Northern Initiative (MB) » The Manitoba Advisory Team and members have been working to identify sources of funding to assist in incorporating rural and remote voices into community based HIV/AIDS research. In consultation with northern partners, two CIHR planning grants have been applied for. The goal of these grants is to increase the visibility of rural and remote community concerns surrounding HIV-related issues, as well as to increase community capacity to lead programs of research reflective of the priorities of their communities.

Increasing Community Capacity (National)

« Increasing Capacity for HIV Research in Northern Canada Working Group » This working group is a recent initiative and aims to foster a national dialogue in order to better understand capacity-building and community-based research needs in northern regions.

« REACH Capacity-Building Committee » This committee works to identify, promote, and facilitate the delivery of capacity building across REACH programs of research, and the broader REACH network. This group fosters skills across sectors and regions, promotes interdisciplinary methodologies and CBR approaches, and enhances research teams' capacity to use data from longitudinal HIV cohorts and health service databases. Current topic areas include: intersectionality, ASO capacity building priorities, supporting CBR in rural and remote communities, and program and implementation science.

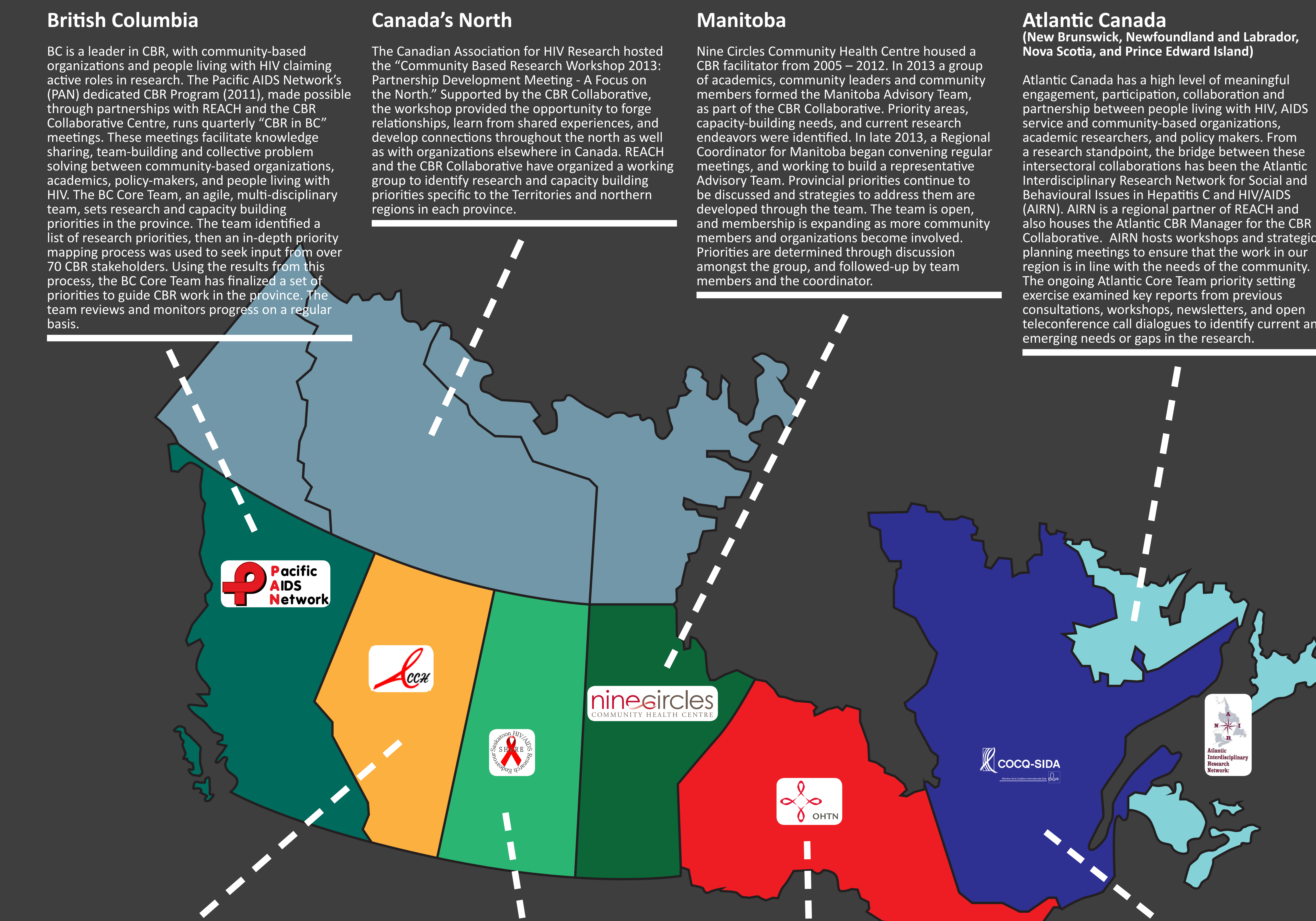
HIV/AIDS SERVICES

The Point-of-Care Testing Working Group (National)

The Point-of-Care Testing Working Group (POCT Working Group) brings together over 50 stakeholders, community representatives, HIV services providers, policy makers, and researchers. Its aim is to increase national collaboration on point-of-care HIV testing initiatives.

« Scoping review initiative (National) » A sub-group of the national POCT Working Group, the POCT Scoping Review Team is conducting a scoping review of literature on POCT programs and services in Canada and comparable countries. The focus of this review is access to and uptake of HIV POCT, successful and innovative models, and the identification of gaps. The results of the scoping review will inform further research development, addressing key areas in regions across Canada.

« CBR catalyst grant: Community-preparedness in the context of rapid HIV/AIDS testing, 2015 (Atlantic) » This catalyst grant aims to develop and pilot test a community preparedness logic model for integrated approaches for HIV/STBBI POCT approaches, focusing primarily on the needs of rural regions in Atlantic Canada.



British Columbia

BC is a leader in CBR, with community-based organizations and people living with HIV playing active roles in research. The Pacific AIDS Network's (PAN) dedicated CBR Program (2011), made possible through partnerships with REACH and the CBR Collaborative Centre, runs quarterly "CBR in BC" meetings. These meetings facilitate knowledge sharing, team-building and collective problem solving between community-based organizations, academics, policy-makers, and people living with HIV. The BC Core Team, an agile, multi-disciplinary team, sets research and capacity building priorities in the province. The team identified a list of research priorities, then an in-depth priority mapping process was used to seek input from over 70 CBR stakeholders. Using the results from this process, the BC Core Team has finalized a set of priorities to guide CBR work in the province. The team reviews and monitors progress on a regular basis.

Canada's North

The Canadian Association for HIV Research hosted the "Community Based Research Workshop 2013: Partnership Development Meeting - A Focus on the North." Supported by the CBR Collaborative, the workshop provided the opportunity to forge relationships, learn from shared experiences, and develop connections throughout the north as well as with organizations elsewhere in Canada. REACH and the CBR Collaborative have organized a working group to identify research and capacity building priorities specific to the Territories and northern regions in each province.

Manitoba

Nine Circles Community Health Centre housed a CBR facilitator from 2005 – 2012. In 2013 a group of academics, community leaders and community members formed the Manitoba Advisory Team, as part of the CBR Collaborative. Priority areas, capacity-building needs, and current research endeavors were identified. In late 2013, a Regional Coordinator for Manitoba began convening regular meetings, and working to build a representative Advisory Team. Provincial priorities continue to be discussed and strategies to address them are developed through the team. The team is open, and membership is expanding as more community members and organizations become involved. Priorities are determined through discussion amongst the group, and followed-up by team members and the coordinator.

Atlantic Canada (New Brunswick, Newfoundland and Labrador, Nova Scotia, and Prince Edward Island)

Atlantic Canada has a high level of meaningful engagement, participation, collaboration and partnership between people living with HIV, AIDS service and community-based organizations, academic researchers, and policy makers. From a research standpoint, the bridge between these intersectoral collaborations has been the Atlantic Interdisciplinary Research Network for Social and Behavioural Issues in Hepatitis C and HIV/AIDS (AIRN). AIRN is a regional partner of REACH and also houses the Atlantic CBR Manager for the CBR Collaborative. AIRN hosts workshops and strategic planning meetings to ensure that the work in our region is in line with the needs of the community. The ongoing Atlantic Core Team priority setting exercise examined key reports from previous consultations, workshops, newsletters, and open teleconference call dialogues to identify current and emerging needs or gaps in the research.

Alberta

The Alberta Community Council on HIV (ACCH) is a non-profit, provincial network of 11 regionally-based AIDS service organizations devoted to addressing the care, treatment, support or prevention-education needs of persons living with HIV/AIDS. Recognizing that social change is a necessary response to HIV, ACCH supports community-based responses and provides provincial leadership through collective action and a unified voice. Support takes the form of assisting the membership with skill and capacity building, as well as advocacy and coordination. ACCH hosted the Alberta CBR Strategy for the HIV Sector meeting to identify gaps and opportunities for meaningful HIV CBR over the next three to five years. Research will focus on the populations most affected by HIV (MSM, Aboriginal, and people from HIV-endemic countries), with an emphasis on the importance of a regional response to HIV – engagement in research that reflects the Alberta context: urban, rural, farming, oil and gas industry, etc.

Saskatchewan

The Saskatoon HIV/AIDS Research Endeavour (SHARE) is a multidisciplinary group of physicians, social scientists, nurses, pharmacists, social workers, community based organizations, and national partners developing a research agenda for HIV/AIDS in Saskatoon. SHARE partners with the CBR Collaborative on the development of national signature projects through working groups. A full-time CBR Coordinator is nurturing a network of over 20 community organizations and representatives, frontline staff, and academics. Partners are engaged in their own space, encouraging the input and involvement of organizational teams and the people who use services in Saskatoon. The grassroots approach to CBR development in Saskatchewan encourages engagement in one-on-one conversations about emerging priorities, particularly population-specific and social determinant of health issues.

Ontario

The Ontario HIV Treatment Network (OHTN) is a collaborative network of people with HIV, community-based agencies, health care providers, government policy makers, and researchers. The OHTN supports and conducts high quality research to help end the HIV epidemic, and shares the best available evidence with those who can put that knowledge into action. As the host organization for REACH and the CBR Collaborative, the OHTN has provided critical in-kind supports to these centres, including: peer research associate training and expertise; grant writing training and support for emerging HIV researchers; learning and networking opportunities at the OHTN research conference; IT and knowledge translation expertise; access to information in the OHTN Cohort Study; and Rapid Response Service support. The OHTN regularly consults community, academic, research and policy stakeholder groups to inform program development.

Québec

Québec is a leader in community-led and action research. In 1999, Health Canada started supporting a CBR Coordinator position housed at COCQ-SIDA (a coalition of community-based organizations in Quebec). The CBR Coordinator is now a partner in the CBR Collaborative. COCQ-SIDA's executive director and UQAM CReCES chair holder (Chaire de Recherche du Canada en Éducation à la Santé) are leading the development of the Quebec Core Team of the CBR Collaborative. In 2013, a priority-setting meeting represented a novel opportunity to share past experiences and develop a concerted agenda. Fifty-two participants discussed research and capacity-building priorities for the province. The consultation resulted in a synthesis report listing six research priorities and four capacity-building priorities. The synthesis report serves as a guide for action.