



A house is not a home: the importance of a qualitative component in housing and HIV research

Surita Parashar

Faculty of Health Sciences, SFU
BC Centre for Excellence in HIV/AIDS

January 11 2012





Outline

- Background: the LISA study
- The way I see it project
- The contributions of qualitative methods
- Types of qualitative methods



British Columbia
Centre for Excellence
in HIV/AIDS





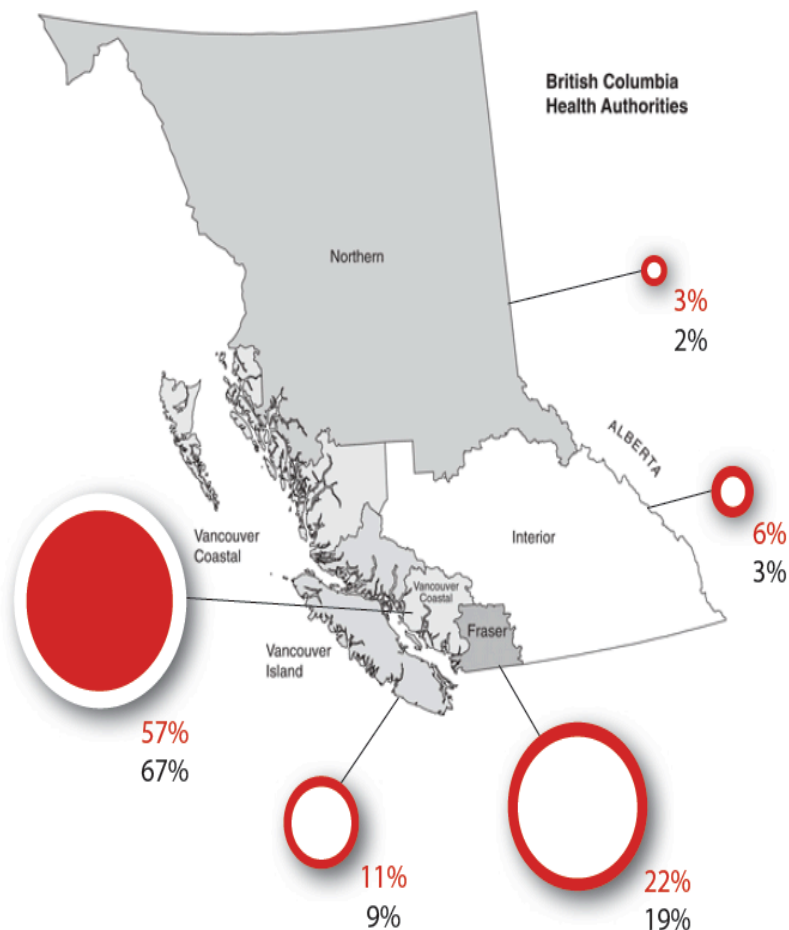
Background: The LISA study

- Longitudinal Investigations into Supportive and Ancillary health services (LISA) project is a cross-sectional study of individuals on HAART in BC.
- Participants were recruited through the Drug Treatment Program (DTP) at the BC Centre for Excellence in HIV/AIDS (BC-CfE).
- Clinically relevant socio-demographic factors were collected through an interviewer-administered survey and clinical variables were obtained through a longitudinal linkage with the DTP at the BC-CfE.

Background: the LISA study

● % on treatment in Health Authority (total = 6014)

○ % interviewed in LISA (total = 1000)



- From July 2007-January 2010, over 1,000 participants
- Average age: 45 (40-51)
- Women: 225 (25.5%)
- Men who have sex with men: 282 (28.2%)
- Food insecure: 684 (68.4%)
- History of injection drug use: 601 (60.1%)
- Unstably housed: 316 (31.6%)



British Columbia
Centre for Excellence
in HIV/AIDS

Dr. **Peter**AIDS
FOUNDATION

Knowledge Translation and Exchange



Measure of housing status

- Unstable (living in a SRO, shelter, hostel, treatment centre, prison, or no fixed address at time of interview) vs.
- Stable (living in an apartment or house).



British Columbia
Centre for Excellence
in HIV/AIDS





Qualitative Research 101

- Qualitative research focuses on **interpretation of phenomena** in their natural settings to make sense in terms of the **meanings people bring** to these settings. Qualitative research involves collecting information about personal experiences, introspection, life story, interviews, observations, historical, interactions and visual text which are significant moments and meaningful in peoples' lives.

– Denzin and Lincoln 1994

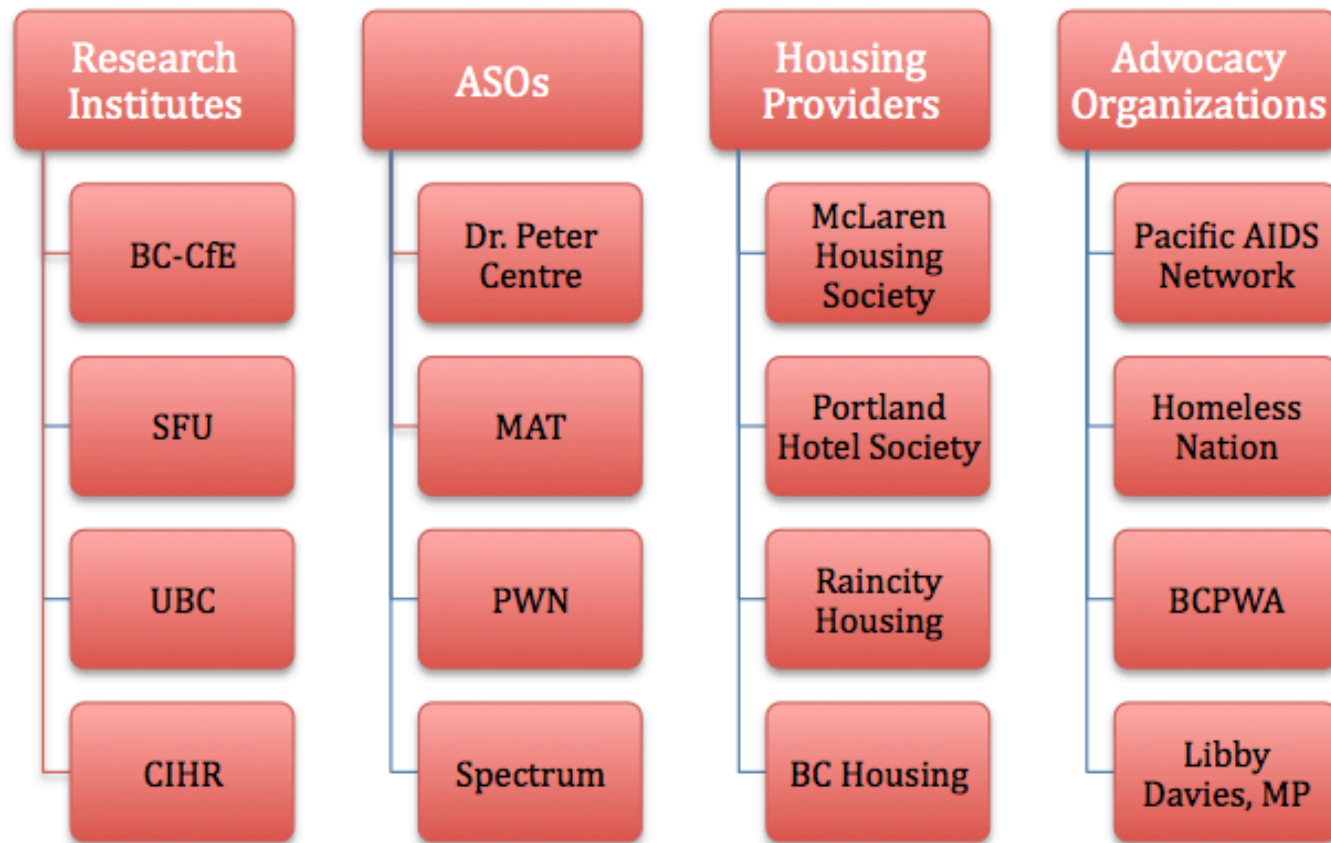


British Columbia
Centre for Excellence
in HIV/AIDS



Community Based Research

Brings researchers together with members of the community





Community Based Research

Equitably involves communities through all stages of research

Meaningful Involvement of People living with HIV and AIDS in

- Data collection
- Data analysis
- Data interpretation
- Knowledge translation and exchange
- Evaluating outcomes



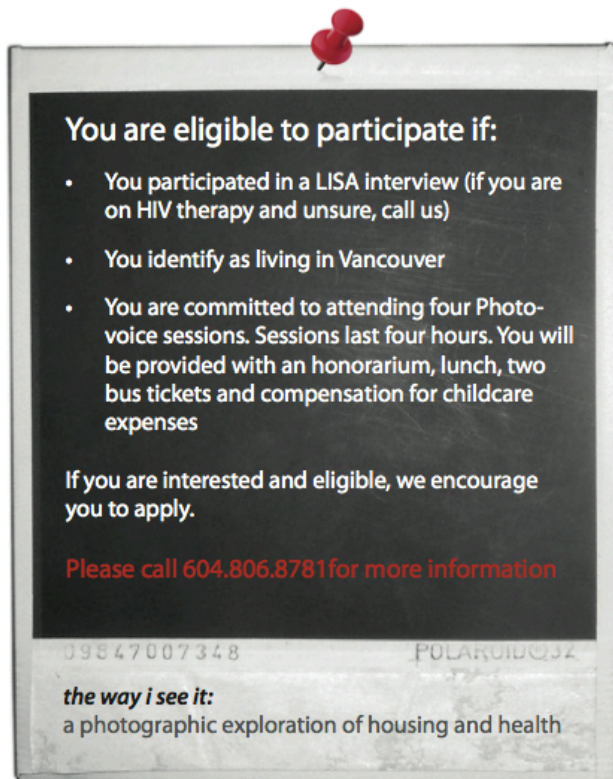
British Columbia
Centre for Excellence
in HIV/AIDS





Recruitment

interested?



You are eligible to participate if:

- You participated in a LISA interview (if you are on HIV therapy and unsure, call us)
- You identify as living in Vancouver
- You are committed to attending four Photo-voice sessions. Sessions last four hours. You will be provided with an honorarium, lunch, two bus tickets and compensation for childcare expenses

If you are interested and eligible, we encourage you to apply.

Please call 604.806.8781 for more information

09847007348 POLAROID 32

the way i see it:
a photographic exploration of housing and health

the way i see it:

a photographic exploration of housing
and health among persons living with
HIV in Vancouver



"Together, we will work towards positive change in the community"

Please call 604.806.8781 for more information



British Columbia
Centre for Excellence
in HIV/AIDS





Progress to date



- 9 community researchers recruited and trained by peer facilitator.
- 4 group sessions and 9 one-on-one sessions conducted
- Over 300 photos taken
- Qualitative analysis on going
- Upcoming photo exhibit



British Columbia
Centre for Excellence
in HIV/AIDS





Data Analysis and interpretation

Photo
interviews :
group and
one on one

Review
transcripts

Look for
themes and
patterns in
the data

Build
hypotheses

Develop a
theory



British Columbia
Centre for Excellence
in HIV/AIDS

SFU



Knowledge Translation and exchange

Photo exhibit inviting:

- Researchers
- Service providers
- Community members
- PHA and members of marginalized groups
- Regional and provincial decision makers



British Columbia
Centre for Excellence
in HIV/AIDS





The way I see it:

A photographic exploration of housing and health
among people living with HIV in Vancouver

Save the Date!

March 1st 2012

7:00pm – 9:00pm

Reception, meet & greet with photographers
and a discussion about the impact of
housing on the health of
people living with HIV

W2 media café
250-111 West Hastings street



British Columbia
Centre for Excellence
in HIV/AIDS





Why photovoice?

Advantages:

- Increased accessibility or 'voice'
- Deeper, more meaningful engagement
- Involves people who favour visual expression
- An effective method of engaging with policymakers



British Columbia
Centre for Excellence
in HIV/AIDS





Qualitative vs. Quantitative

	LISA study	The Way I see it
Goal	Prediction, test hypothesis	Understand, meaning
Focus	Quantity (prevalence of unstable housing)	Quality (features of living conditions)
Data Collection	Questionnaire, scales	Photos, interviews
Research Design	Structured, predetermined	Flexible, emerging (!)
Sample	Large, random, representative (1000)	Small, purposeful (9)
Analysis	Deductive (statistical methods)	Inductive (by the research team)
Role of Researcher	Detached	Immersed





Acknowledgements

The Way I see it team: Lora Bellrose, Mel Hennan, Rosemina Jamal, Rob Lamoureux, , Jennifer Mendoza, Randy Moors, Valerie Nicholson, Lyanna Storm, Lynda Swanson, Daniel Wilson.

Community partners

LISA project staff

Simon Fraser University

BC Centre for Excellence in HIV/AIDS staff

Canadian Institutes of Health Research

LISA participants

